

# HSP90AA1 Recombinant Antibody



RACO0193

---

## Product Information

**Size:**

50ul

**Reactivity:**

Human, Rat

**Source:**

Human

**Isotype:**

Rabbit IgG

**Applications:**

ELISA, WB, IHC, IF, IP

**Recommended dilutions:**

WB:1:500-1:5000, IHC:1:50-1:200, IF:1:20-1:200, IP:1:200-1:1000

**Protein Background:**

Molecular chaperone that promotes the maturation, structural maintenance and proper regulation of specific target proteins involved for instance in cell cycle control and signal transduction. Undergoes a functional cycle that is linked to its ATPase activity which is essential for its chaperone activity. This cycle probably induces conformational changes in the client proteins, thereby causing their activation. Interacts dynamically with various co-chaperones that modulate its substrate recognition, ATPase cycle and chaperone function .

**Gene ID:**

HSP90AA1

**Uniprot**

P07900

**Synonyms:**

Heat shock protein HSP 90-alpha, Heat shock 86 kDa, HSP 86, HSP86, Lipopolysaccharide-associated protein 2, LAP-2, LPS-associated protein 2, Renal carcinoma antigen NY-REN-38, HSP90AA1, HSP90A, HSPC1, HSPCA

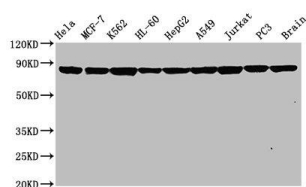
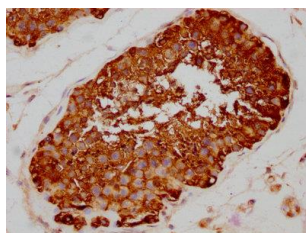
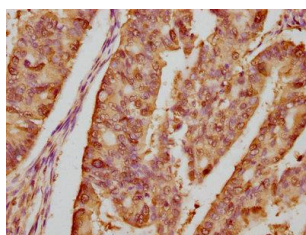
**Immunogen:**

A synthesized peptide derived from human HSP90AA1.

**Storage:**

Rabbit IgG in phosphate buffered saline , pH 7.4, 150mM NaCl, 0.02% sodium azide and 50% glycerol.

## Product Images



IHC image of RACO0193 diluted at 1:80 and staining in paraffin-embedded human endometrial cancer performed on a Leica Bond™ system. After dewaxing and hydration, antigen retrieval was mediated by high pressure in a citrate buffer (pH 6.0). Section was blocked with 10% normal goat serum 30min at RT. Then primary antibody (1% BSA) was incubated at 4°C overnight. The primary is detected by a biotinylated secondary antibody and visualized using an HRP conjugated SP system.

IHC image of RACO0193 diluted at 1:80 and staining in paraffin-embedded human testis tissue performed on a Leica Bond™ system. After dewaxing and hydration, antigen retrieval was mediated by high pressure in a citrate buffer (pH 6.0). Section was blocked with 10% normal goat serum 30min at RT. Then primary antibody (1% BSA) was incubated at 4°C overnight. The primary is detected by a biotinylated secondary antibody and visualized using an HRP conjugated SP system.

### Western Blot

Positive WB detected in( HeLa whole cell lysate) MCF-7 whole cell lysate) K562 whole cell lysate) HL-60 whole cell lysate) HepG2 whole cell lysate) A549 whole cell lysate) Jurkat whole cell lysate) PC3 whole cell lysate) Rat brain tissue

All lanes: Hsp90 alpha antibody at 0.8µg/ml

Secondary

Goat polyclonal to rabbit IgG at 1:50000 dilution

Predicted band size: 85, 99 KDa

Observed band size: 85 KDa