

RACO0217

---

## Product Information

**Size:**

50ul

**Reactivity:**

Human

**Source:**

Homo sapiens (Human)

**Isotype:**

Rabbit IgG

**Applications:**

ELISA, WB, IHC

**Recommended dilutions:**

WB:1:500-1:5000, IHC:1:50-1:200

**Protein Background:**

Histone demethylase that demethylates both 'Lys-4' (H3K4me) and 'Lys-9' (H3K9me) of histone H3, thereby acting as a coactivator or a corepressor, depending on the context. Acts by oxidizing the substrate by FAD to generate the corresponding imine that is subsequently hydrolyzed. Acts as a corepressor by mediating demethylation of H3K4me, a specific tag for epigenetic transcriptional activation. Demethylates both mono- (H3K4me1) and di-methylated (H3K4me2) H3K4me. May play a role in the repression of neuronal genes.

**Gene ID:**

KDM1A

**Uniprot**

O60341

**Synonyms:**

Lysine-specific histone demethylase 1A (EC 1. - . -) (BRAF35-HDAC complex protein BHC110) (Flavin-containing amine oxidase domain-containing protein 2), KDM1A, AOF2 KDM1 KIAA0601 LSD1

**Immunogen:**

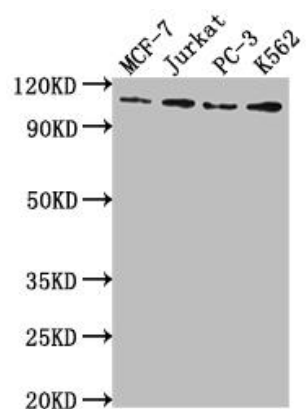
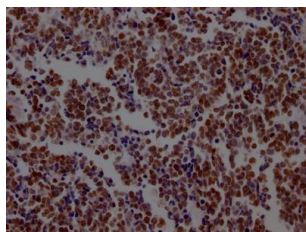
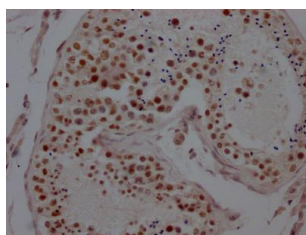
A synthesized peptide derived from human KDM1 / LSD1.

**Storage:**

Rabbit IgG in phosphate buffered saline, pH 7.4, 150mM NaCl, 0.02% sodium azide and 50% glycerol.

## Product Images

---



IHC image of RACO0217 diluted at 1:100 and staining in paraffin-embedded human testis tissue performed on a Leica Bond™ system. After dewaxing and hydration, antigen retrieval was mediated by high pressure in a citrate buffer (pH 6.0). Section was blocked with 10% normal goat serum 30min at RT. Then primary antibody (1% BSA) was incubated at 4°C overnight. The primary is detected by a Goat anti-rabbit IgG polymer labeled by HRP and visualized using 0.05% DAB.

IHC image of RACO0217 diluted at 1:100 and staining in paraffin-embedded human lung cancer performed on a Leica Bond™ system. After dewaxing and hydration, antigen retrieval was mediated by high pressure in a citrate buffer (pH 6.0). Section was blocked with 10% normal goat serum 30min at RT. Then primary antibody (1% BSA) was incubated at 4°C overnight. The primary is detected by a Goat anti-rabbit IgG polymer labeled by HRP and visualized using 0.05% DAB.

### Western Blot

Positive WB detected in( MCF-7 whole cell lysate) Jurkat whole cell lysate) PC-3 whole cell lysate) K562 whole cell lysate) All lanes: KDM1A antibody at 1:2000

### Secondary

Goat polyclonal to rabbit IgG at 1:50000 dilution

Predicted band size: 93, 96 kDa

Observed band size: 110 kDa