

ALAS1 Recombinant Antibody



RACO0219

Product Information

Size:

50ul

Reactivity:

Human

Source:

Homo sapiens (Human)

Isotype:

Rabbit IgG

Applications:

ELISA, WB

Recommended dilutions:

WB:1:500-1:5000

Protein Background:

Cytosol, mitochondrial matrix, mitochondrion, nucleoplasm, 5-aminolevulinate synthase activity, identical protein binding, heme biosynthetic process, mitochondrion organization, regulation of lipid metabolic process.

Gene ID:

ALAS1

Uniprot

P13196

Synonyms:

5-aminolevulinate synthase, nonspecific, mitochondrial (ALAS-H) (EC 2.3.1.37) (5-aminolevulinic acid synthase 1) (Delta-ALA synthase 1) (Delta-aminolevulinate synthase 1), ALAS1, ALAS3 ALASH

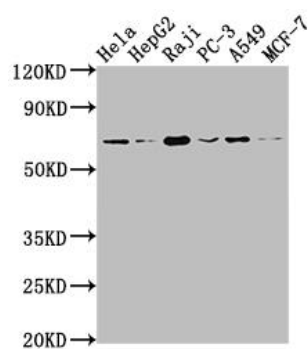
Immunogen:

A synthesized peptide derived from human Alas1.

Storage:

Rabbit IgG in phosphate buffered saline, pH 7.4, 150mM NaCl, 0.02% sodium azide and 50% glycerol.

Product Images



Western Blot

Positive WB detected in(HeLa whole cell lysate) HepG2 whole cell lysate) Raji whole cell lysate) PC-3 whole cell lysate) A549 whole cell lysate) MCF-7 whole cell lysate) All lanes: ALAS1 antibody at 1:1500

Secondary

Goat polyclonal to rabbit IgG at 1:50000 dilution

Predicted band size: 71, 13 kDa

Observed band size: 71 kDa