

RACO0227

Product Information

Size:

50ul

Reactivity:

Human

Source:

Homo sapiens (Human)

Isotype:

Rabbit IgG

Applications:

ELISA, WB, IF, FC

Recommended dilutions:

WB:1:500-1:5000, IF:1:20-1:200, FC:1:20-1:200

Protein Background:

ATP-citrate synthase is the primary enzyme responsible for the synthesis of cytosolic acetyl-CoA in many tissues. Has a central role in de novo lipid synthesis. In nervous tissue it may be involved in the biosynthesis of acetylcholine.

Gene ID:

ACLY

Uniprot

P53396

Synonyms:

ATP-citrate synthase (EC 2.3.3.8) (ATP-citrate (pro-S-)-lyase) (ACL) (Citrate cleavage enzyme), ACLY

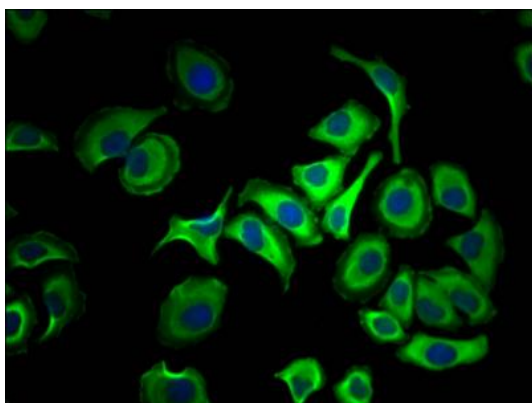
Immunogen:

A synthesized peptide derived from human ATP citrate lyase.

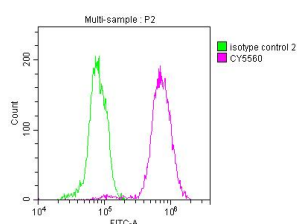
Storage:

Rabbit IgG in phosphate buffered saline, pH 7.4, 150mM NaCl, 0.02% sodium azide and 50% glycerol.

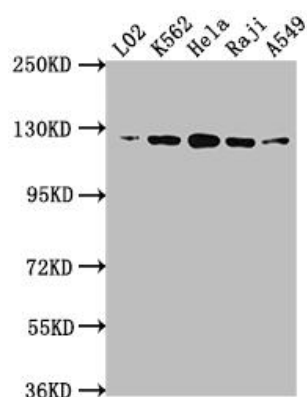
Product Images



Immunofluorescence staining of HepG2 Cells with RACO0227 at 1:50, counter-stained with DAPI. The cells were fixed in 4% formaldehyde, permeated by 0.2% TritonX-100, and blocked in 10% normal Goat Serum. The cells were then incubated with the antibody overnight at 4°C. Nuclear DNA was labeled in blue with DAPI. The secondary antibody was FITC-conjugated AffiniPure Goat Anti-Rabbit IgG (H+L).



Overlay histogram showing HeLa cells stained with RACO0227 (red line) at 1:50. The cells were fixed with 70% Ethylalcohol (18h) and then incubated in 10% normal goat serum to block non-specific protein-protein interactions followed by the antibody ($1\mu\text{g}$) 1×10^6 cells for 1 h at 4°C. The secondary antibody used was FITC-conjugated goat anti-rabbit IgG (H+L) at 1/200 dilution for 30min at 4°C. Control antibody (green line) was Rabbit IgG ($1\mu\text{g}$) 1×10^6 cells used under the same conditions. Acquisition of >10,000 events was performed.



Western Blot

Positive WB detected in (L02 whole cell lysate) K562 whole cell lysate) HeLa whole cell lysate) Raji whole cell lysate) A549 whole cell lysate) All lanes: ACLY antibody at 1:1500

Secondary

Goat polyclonal to rabbit IgG at 1:50000 dilution

Predicted band size: 121, 120, 92 kDa

Observed band size: 120 kDa