

DOT1L Recombinant Antibody



RACO0228

Product Information

Size:

50ul

Reactivity:

Human

Source:

Homo sapiens (Human)

Isotype:

Rabbit IgG

Applications:

ELISA, WB

Recommended dilutions:

WB:1:500-1:5000

Protein Background:

Histone methyltransferase. Methylates 'Lys-79' of histone H3. Nucleosomes are preferred as substrate compared to free histones. Binds to DNA.

Gene ID:

DOT1L

Uniprot

Q8TEK3

Synonyms:

Histone-lysine N-methyltransferase, H3 lysine-79 specific (EC 2.1.1.43) (DOT1-like protein) (Histone H3-K79 methyltransferase) (H3-K79-HMTase) (Lysine N-methyltransferase 4), DOT1L, KIAA1814 KMT4

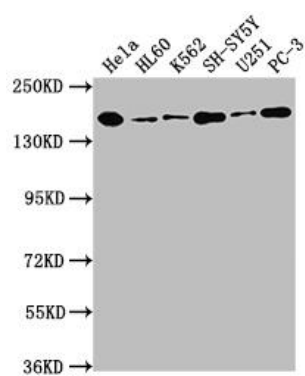
Immunogen:

A synthesized peptide derived from human KMT4 / Dot1L.

Storage:

Rabbit IgG in phosphate buffered saline, pH 7.4, 150mM NaCl, 0.02% sodium azide and 50% glycerol.

Product Images



Western Blot

Positive WB detected in(HeLa whole cell lysate) HL60 whole cell lysate) K562 whole cell lysate) SH-SY5Y whole cell lysate) U251 whole cell lysate) PC-3 whole cell lysate) All lanes: DOT1L antibody at 1:1500

Secondary

Goat polyclonal to rabbit IgG at 1:50000 dilution

Predicted band size: 165, 185 kDa

Observed band size: 185 kDa