

# TOP2A Recombinant Antibody



RACO0244

---

## Product Information

**Size:**

50ul

**Reactivity:**

Human, Mouse

**Source:**

Homo sapiens (Human)

**Isotype:**

Rabbit IgG

**Applications:**

ELISA, WB, IHC

**Recommended dilutions:**

WB:1:500-1:5000, IHC:1:50-1:200

**Protein Background:**

Control of topological states of DNA by transient breakage and subsequent rejoining of DNA strands. Topoisomerase II makes double-strand breaks. Essential during mitosis and meiosis for proper segregation of daughter chromosomes. May play a role in regulating the period length of ARNTL/BMAL1 transcriptional oscillation (By similarity).

**Gene ID:**

TOP2A

**Uniprot**

P11388

**Synonyms:**

DNA topoisomerase 2-alpha (EC 5.99.1.3) (DNA topoisomerase II, alpha isozyme), TOP2A, TOP2

**Immunogen:**

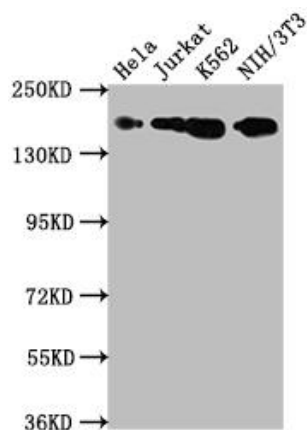
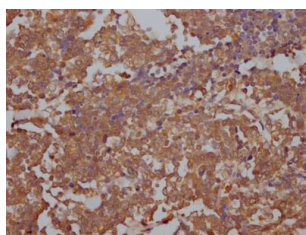
A synthesized peptide derived from human Topoisomerase II alpha.

**Storage:**

Rabbit IgG in phosphate buffered saline, pH 7.4, 150mM NaCl, 0.02% sodium azide and 50% glycerol.

## Product Images

---



IHC image of RACO0244 diluted at 1:100 and staining in paraffin-embedded human lung cancer performed on a Leica Bond™ system. After dewaxing and hydration, antigen retrieval was mediated by high pressure in a citrate buffer (pH 6.0). Section was blocked with 10% normal goat serum 30min at RT. Then primary antibody (1% BSA) was incubated at 4°C overnight. The primary is detected by a Goat anti-rabbit IgG polymer labeled by HRP and visualized using 0.05% DAB.

### Western Blot

Positive WB detected in( HeLa whole cell lysate) Jurkat whole cell lysate) K562 whole cell lysate) NIH/3T3 whole cell lysate) All lanes: TOP2A antibody at 1:1500

### Secondary

Goat polyclonal to rabbit IgG at 1:50000 dilution

Predicted band size: 175, 178, 179, 183 kDa

Observed band size: 175 kDa