

RACO0251

Product Information

Size:

50ul

Reactivity:

Human, Mouse

Source:

Homo sapiens (Human)

Isotype:

Rabbit IgG

Applications:

ELISA, WB, IF, IP

Recommended dilutions:

WB:1:500-1:5000, IF:1:20-1:200, IP:1:200-1:1000

Protein Background:

Receptor-proximal protein kinase regulating integrin-mediated signal transduction . May act as a mediator of inside-out integrin signaling. Focal adhesion protein part of the complex ILK-PINCH. This complex is considered to be one of the convergence points of integrin- and growth factor-signaling pathway. Could be implicated in mediating cell architecture, adhesion to integrin substrates and anchorage-dependent growth in epithelial cells. Phosphorylates beta-1 and beta-3 integrin subunit on serine and threonine residues, but also AKT1 and GSK3B .

Gene ID:

ILK

Uniprot

Q13418

Synonyms:

Integrin-linked protein kinase (EC 2.7.11.1) (59 kDa serine/threonine-protein kinase) (ILK-1) (ILK-2) (p59ILK), ILK, ILK1 ILK2

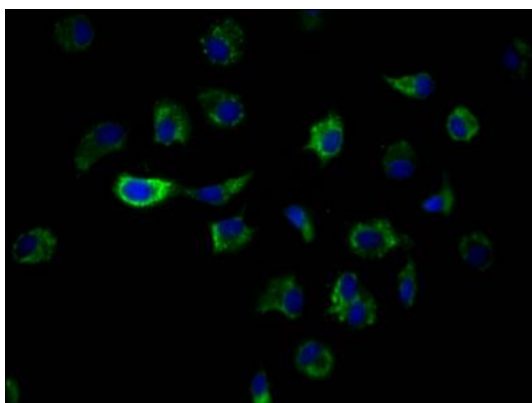
Immunogen:

A synthesized peptide derived from human ILK.

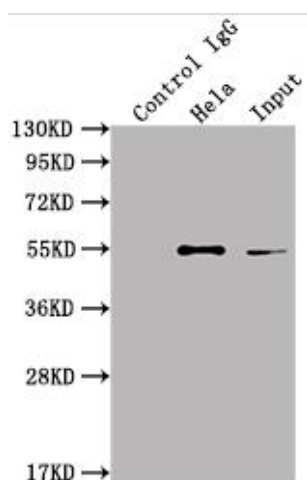
Storage:

Rabbit IgG in phosphate buffered saline, pH 7.4, 150mM NaCl, 0.02% sodium azide and 50% glycerol.

Product Images



Immunofluorescence staining of MCF7 Cells with RACO0251 at 1:50, counter-stained with DAPI. The cells were fixed in 4% formaldehyde and blocked in 10% normal Goat Serum. The cells were then incubated with the antibody overnight at 4°C. Nuclear DNA was labeled in blue with DAPI. The secondary antibody was FITC-conjugated AffiniPure Goat Anti-Rabbit IgG (H+L).

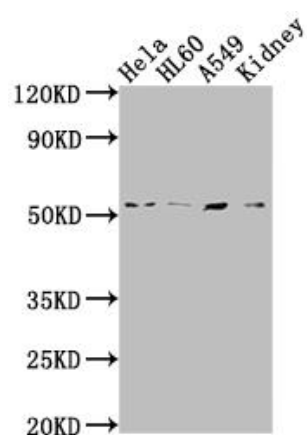


Immunoprecipitating ILK in HeLa whole cell lysate) Lane 1: Rabbit control IgG instead of RACO0251 in HeLa whole cell lysate)

For western blotting, a HRP-conjugated Protein G antibody was used as the secondary antibody (1/2000)

Lane 2: RACO0251(2µg)+ HeLa whole cell lysate)(500µg)

Lane 3: HeLa whole cell lysate) (10µg)



Western Blot

Positive WB detected in(HeLa whole cell lysate) HL60 whole cell lysate)

A549 whole cell lysate) Mouse kidney tissue

All lanes: ILK antibody at 1:2000

Secondary

Goat polyclonal to rabbit IgG at 1:50000 dilution

Predicted band size: 52, 45, 37 kDa

Observed band size: 51 kDa