

RACO0252

---

## Product Information

**Size:**

50ul

**Reactivity:**

Human, Mouse

**Source:**

Homo sapiens (Human)

**Isotype:**

Rabbit IgG

**Applications:**

ELISA, WB, FC

**Recommended dilutions:**

WB:1:500-1:5000, FC:1:20-1:200

**Protein Background:**

Converts arachidonate to prostaglandin H2 (PGH2), a committed step in prostanoid synthesis. Involved in the constitutive production of prostanoids in particular in the stomach and platelets. In gastric epithelial cells, it is a key step in the generation of prostaglandins, such as prostaglandin E2 (PGE2), which plays an important role in cytoprotection. In platelets, it is involved in the generation of thromboxane A2 (TXA2), which promotes platelet activation and aggregation, vasoconstriction and proliferation of vascular smooth muscle cells.

**Gene ID:**

PTGS1

**Uniprot**

P23219

**Synonyms:**

Prostaglandin G/H synthase 1 (EC 1.14.99.1) (Cyclooxygenase-1) (COX-1) (Prostaglandin H2 synthase 1) (PGH synthase 1) (PGHS-1) (PHS 1) (Prostaglandin-endoperoxide synthase 1), PTGS1, COX1

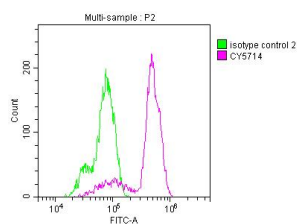
**Immunogen:**

A synthesized peptide derived from human COX1.

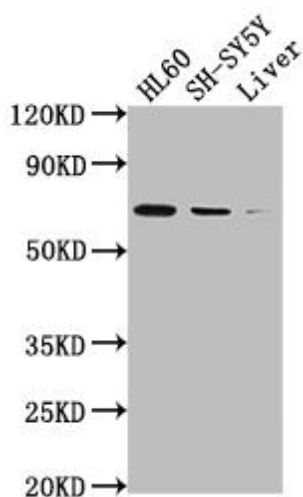
**Storage:**

Rabbit IgG in phosphate buffered saline, pH 7.4, 150mM NaCl, 0.02% sodium azide and 50% glycerol.

## Product Images



Overlay histogram showing HeLa cells stained with RACO0252 (red line) at 1:50. The cells were fixed with 70% Ethylalcohol (18h) and then incubated in 10% normal goat serum to block non-specific protein-protein interactions followed by the antibody (1 $\mu$ g)1\*10<sup>6</sup>cells) for 1 h at 4°C. The secondary antibody used was FITC-conjugated goat anti-rabbit IgG (H+L) at 1/200 dilution for 30min)at 4°C. Control antibody (green line) was Rabbit IgG (1 $\mu$ g)1\*10<sup>6</sup>cells) used under the same conditions. Acquisition of >10,000 events was performed.



### Western Blot

Positive WB detected in( HL60 whole cell lysate) SH-SY5Y whole cell lysate) Mouse liver tissue

All lanes: PTGS1 antibody at 1:2000

Secondary

Goat polyclonal to rabbit IgG at 1:50000 dilution

Predicted band size: 69, 65, 62, 57, 72, 73 kDa

Observed band size: 72 kDa