

CD38 Recombinant Antibody



RACO0256

Product Information

Size:

50ul

Reactivity:

Human

Source:

Homo sapiens (Human)

Isotype:

Rabbit IgG

Applications:

ELISA, WB, IHC

Recommended dilutions:

WB:1:500-1:5000, IHC:1:50-1:200

Protein Background:

Synthesizes the second messengers cyclic ADP-ribose and nicotinate-adenine dinucleotide phosphate, the former a second messenger for glucose-induced insulin secretion. Also has cADPr hydrolase activity. Also moonlights as a receptor in cells of the immune system.

Gene ID:

CD38

Uniprot

P28907

Synonyms:

ADP-ribosyl cyclase/cyclic ADP-ribose hydrolase 1 (EC 3.2.2.6) (2'-phospho-ADP-ribosyl cyclase) (2'-phospho-ADP-ribosyl cyclase/2'-phospho-cyclic-ADP-ribose transferase) (EC 2.4.99.20) (2'-phospho-cyclic-ADP-ribose transferase) (ADP-ribosyl cyclase 1) (ADPRC 1) (Cyclic ADP-ribose hydrolase 1) (cADPr hydrolase 1) (T10) (CD antigen CD38), CD38

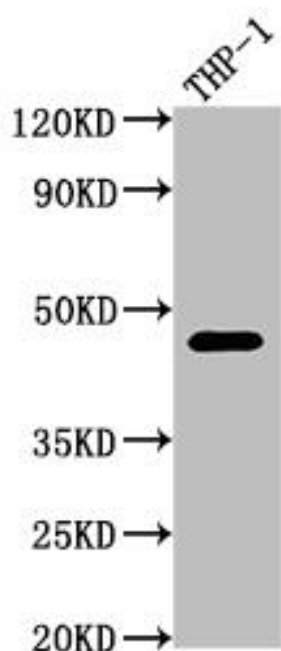
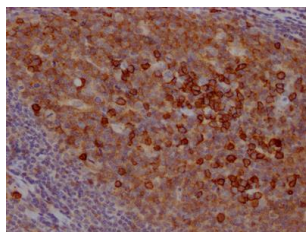
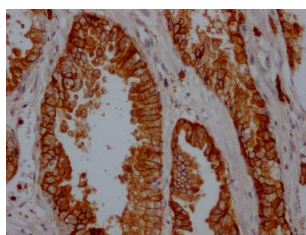
Immunogen:

A synthesized peptide derived from human CD38.

Storage:

Rabbit IgG in phosphate buffered saline, pH 7.4, 150mM NaCl, 0.02% sodium azide and 50% glycerol.

Product Images



IHC image of RACO0256 diluted at 1:100 and staining in paraffin-embedded human prostate cancer performed on a Leica BondTM system. After dewaxing and hydration, antigen retrieval was mediated by high pressure in a citrate buffer (pH 6.0). Section was blocked with 10% normal goat serum 30min at RT. Then primary antibody (1% BSA) was incubated at 4°C overnight. The primary is detected by a Goat anti-rabbit IgG polymer labeled by HRP and visualized using 0.05% DAB.

IHC image of RACO0256 diluted at 1:100 and staining in paraffin-embedded human tonsil tissue performed on a Leica BondTM system. After dewaxing and hydration, antigen retrieval was mediated by high pressure in a citrate buffer (pH 6.0). Section was blocked with 10% normal goat serum 30min at RT. Then primary antibody (1% BSA) was incubated at 4°C overnight. The primary is detected by a Goat anti-rabbit IgG polymer labeled by HRP and visualized using 0.05% DAB.

Western Blot

Positive WB detected in(THP-1 whole cell lysate) All lanes: CD38 antibody at 1:2000

Secondary

Goat polyclonal to rabbit IgG at 1:50000 dilution

Predicted band size: 35, 14 kDa

Observed band size: 42 kDa