

RACO0263

Product Information

Size:

50ul

Reactivity:

Human

Source:

Homo sapiens (Human)

Isotype:

Rabbit IgG

Applications:

ELISA, WB

Recommended dilutions:

WB:1:500-1:5000

Protein Background:

Involved in the activation cascade of caspases responsible for apoptosis execution. Might function by either activating some proteins required for cell death or inactivating proteins necessary for cell survival.

Gene ID:

CASP2

Uniprot

P42575

Synonyms:

Caspase-2 (CASP-2) (EC 3.4.22.55) (Neural precursor cell expressed developmentally down-regulated protein 2) (NEDD-2) (Protease ICH-1) [Cleaved into: Caspase-2 subunit p18, Caspase-2 subunit p13, Caspase-2 subunit p12], CASP2, ICH1 NEDD2

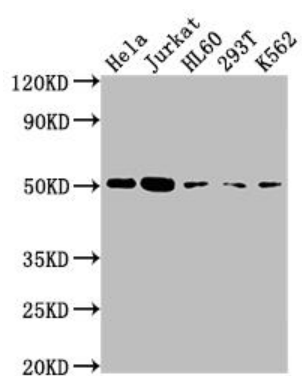
Immunogen:

A synthesized peptide derived from human Caspase-2.

Storage:

Rabbit IgG in phosphate buffered saline, pH 7.4, 150mM NaCl, 0.02% sodium azide and 50% glycerol.

Product Images



Western Blot

Positive WB detected in(HeLa whole cell lysate) Jurkat whole cell lysate)
HL60 whole cell lysate) 293T whole cell lysate) K562 whole cell lysate)

All lanes: CASP2 antibody at 1:2000

Secondary

Goat polyclonal to rabbit IgG at 1:50000 dilution

Predicted band size: 51, 35, 11 kDa

Observed band size: 51 kDa