

RACO0273

---

## Product Information

**Size:**

50ul

**Reactivity:**

Human

**Source:**

Homo sapiens (Human)

**Isotype:**

Rabbit IgG

**Applications:**

ELISA, WB, IP

**Recommended dilutions:**

WB:1:500-1:5000, IP:1:200-1:1000

**Protein Background:**

Serine/threonine-protein kinase involved in the control of the cell cycle and differentiation; promotes G1/S transition. Phosphorylates pRB/RB1 and NPM1. Interacts with D-type G1 cyclins during interphase at G1 to form a pRB/RB1 kinase and controls the entrance into the cell cycle. Involved in initiation and maintenance of cell cycle exit during cell differentiation; prevents cell proliferation and regulates negatively cell differentiation, but is required for the proliferation of specific cell types (e. g. erythroid and hematopoietic cells). Essential for cell proliferation within the dentate gyrus of the hippocampus and the subventricular zone of the lateral ventricles. Required during thymocyte development.

**Gene ID:**

CDK6

**Uniprot**

Q00534

**Synonyms:**

Cyclin-dependent kinase 6 (EC 2.7.11.22) (Cell division protein kinase 6) (Serine/threonine-protein kinase PLSTIRE), CDK6, CDKN6

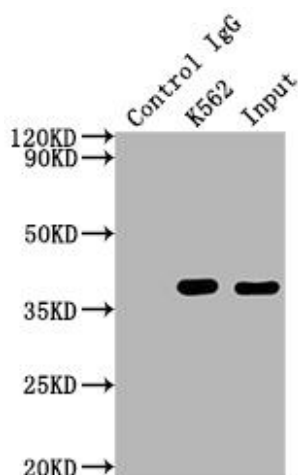
**Immunogen:**

A synthesized peptide derived from human CDK6.

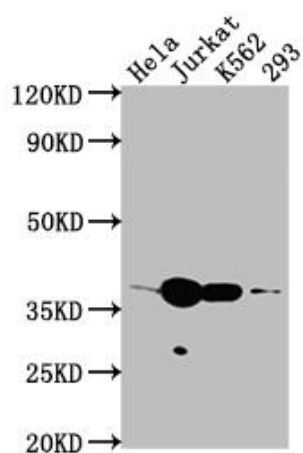
**Storage:**

Rabbit IgG in phosphate buffered saline, pH 7.4, 150mM NaCl, 0.02% sodium azide and 50% glycerol.

## Product Images



Immunoprecipitating CDK6 in K562 whole cell lysate) Lane 1: Rabbit control IgG instead of RACO0273 in K562 whole cell lysate)  
For western blotting, a HRP-conjugated Protein G antibody was used as the secondary antibody (1/2000)  
Lane 2: RACO0273(2μg)+ K562 whole cell lysate)(500μg)  
Lane 3: K562 whole cell lysate) (10μg)



Western Blot  
Positive WB detected in( Hela whole cell lysate) Jurkat whole cell lysate)  
K562 whole cell lysate) 293 whole cell lysate) All lanes: CDK6 antibody  
at 1:2000  
Secondary  
Goat polyclonal to rabbit IgG at 1:50000 dilution  
Predicted band size: 37 kDa  
Observed band size: 37 kDa