

SOD2 Recombinant Antibody



RACO0288

Product Information

Size:

50ul

Reactivity:

Human, Rat

Source:

Homo sapiens (Human)

Isotype:

Rabbit IgG

Applications:

ELISA, WB, IHC

Recommended dilutions:

WB:1:500-1:5000, IHC:1:50-1:200

Protein Background:

Destroys superoxide anion radicals which are normally produced within the cells and which are toxic to biological systems.

Gene ID:

SOD2

Uniprot

P04179

Synonyms:

Superoxide dismutase [Mn], mitochondrial (EC 1.15.1.1), SOD2

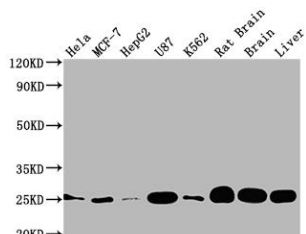
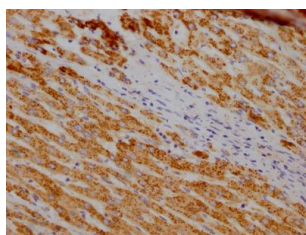
Immunogen:

A synthesized peptide derived from human SOD2.

Storage:

Rabbit IgG in phosphate buffered saline, pH 7.4, 150mM NaCl, 0.02% sodium azide and 50% glycerol.

Product Images



IHC image of RACO0288 diluted at 1:100 and staining in paraffin-embedded human liver cancer performed on a Leica Bond™ system. After dewaxing and hydration, antigen retrieval was mediated by high pressure in a citrate buffer (pH 6.0). Section was blocked with 10% normal goat serum 30min at RT. Then primary antibody (1% BSA) was incubated at 4°C overnight. The primary is detected by a Goat anti-rabbit IgG polymer labeled by HRP and visualized using 0.05% DAB.

Western Blot

Positive WB detected in(HeLa whole cell lysate) MCF-7 whole cell lysate) HepG2 whole cell lysate) U87 whole cell lysate) K562 whole cell lysate) Rat brain tissue, Brain tissue, Liver tissue

All lanes: SOD2 antibody at 1:2000

Secondary

Goat polyclonal to rabbit IgG at 1:50000 dilution

Predicted band size: 25, 21, 19, 20 kDa

Observed band size: 25 kDa