

RACO0292

Product Information

Size:

50ul

Reactivity:

Human

Source:

Homo sapiens (Human)

Isotype:

Rabbit IgG

Applications:

ELISA, WB, IHC, IP

Recommended dilutions:

WB:1:500-1:5000, IHC:1:50-1:200, IP:1:200-1:1000

Protein Background:

Polycomb group (PcG) protein. Component of the PRC2/EED-EZH2 complex, which methylates 'Lys-9' (H3K9me) and 'Lys-27' (H3K27me) of histone H3, leading to transcriptional repression of the affected target gene. The PRC2/EED-EZH2 complex may also serve as a recruiting platform for DNA methyltransferases, thereby linking two epigenetic repression systems. Genes repressed by the PRC2/EED-EZH2 complex include HOXC8, HOXA9, MYT1 and CDKN2A.

Gene ID:

SUZ12

Uniprot

Q15022

Synonyms:

Polycomb protein SUZ12 (Chromatin precipitated E2F target 9 protein) (ChET 9 protein) (Joined to JAZF1 protein) (Suppressor of zeste 12 protein homolog), SUZ12, CHET9 JJAZ1 KIAA0160

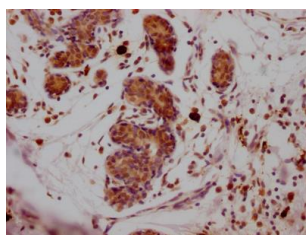
Immunogen:

A synthesized peptide derived from human SUZ12.

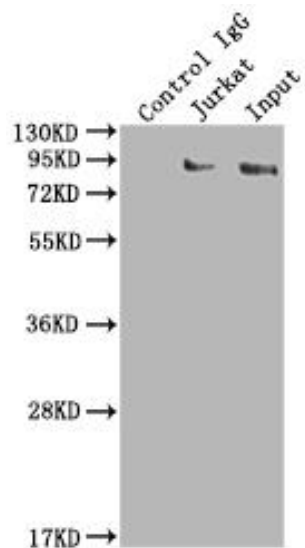
Storage:

Rabbit IgG in phosphate buffered saline, pH 7.4, 150mM NaCl, 0.02% sodium azide and 50% glycerol.

Product Images



IHC image of RACO0292 diluted at 1:100 and staining in paraffin-embedded human breast cancer performed on a Leica Bond™ system. After dewaxing and hydration, antigen retrieval was mediated by high pressure in a citrate buffer (pH 6.0). Section was blocked with 10% normal goat serum 30min at RT. Then primary antibody (1% BSA) was incubated at 4°C overnight. The primary is detected by a Goat anti-rabbit IgG polymer labeled by HRP and visualized using 0.05% DAB.

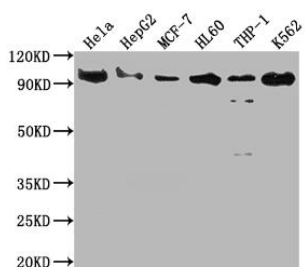


Immunoprecipitating SUZ12 in K562 whole cell lysate) Lane 1: Rabbit control IgG instead of RACO0292 in K562 whole cell lysate)

For western blotting, a HRP-conjugated Protein G antibody was used as the secondary antibody (1/2000)

Lane 2: RACO0292(2µg)+ K562 whole cell lysate)(500µg)

Lane 3: K562 whole cell lysate) (10µg)



Western Blot

Positive WB detected in(HeLa whole cell lysate) HepG2 whole cell lysate) MCF-7 whole cell lysate) HL60 whole cell lysate) THP-1 whole cell lysate) K562 whole cell lysate) All lanes: SUZ12 antibody at 1:2000

Secondary

Goat polyclonal to rabbit IgG at 1:50000 dilution

Predicted band size: 84 kDa

Observed band size: 90 kDa