

RACO0293

Product Information

Size:

50ul

Reactivity:

Human

Source:

Homo sapiens (Human)

Isotype:

Rabbit IgG

Applications:

ELISA, WB

Recommended dilutions:

WB:1:500-1:5000

Protein Background:

Regulates a signal transduction pathway linking plasma membrane receptors to the assembly of focal adhesions and actin stress fibers. Involved in a microtubule-dependent signal that is required for the myosin contractile ring formation during cell cycle cytokinesis. Plays an essential role in cleavage furrow formation. Required for the apical junction formation of keratinocyte cell-cell adhesion. Stimulates PKN2 kinase activity. May be an activator of PLCE1. Activated by ARHGEF2, which promotes the exchange of GDP for GTP. Essential for the SPATA13-mediated regulation of cell migration and adhesion assembly and disassembly.

Gene ID:

RHOA

Uniprot

P61586

Synonyms:

Transforming protein RhoA (Rho cDNA clone 12) (h12), RHOA, ARH12 ARHA RHO12

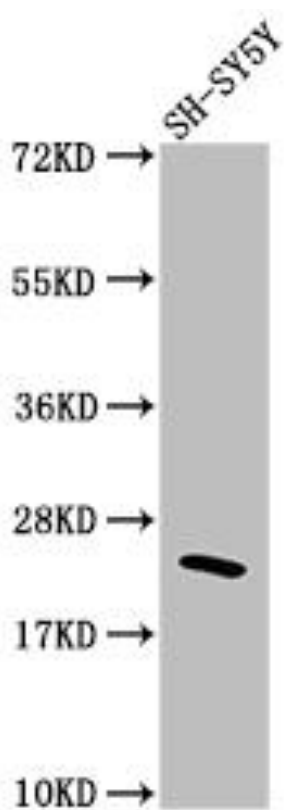
Immunogen:

A synthesized peptide derived from human Rho.

Storage:

Rabbit IgG in phosphate buffered saline, pH 7.4, 150mM NaCl, 0.02% sodium azide and 50% glycerol.

Product Images



Western Blot

Positive WB detected in(SH-SY5Y whole cell lysate) All lanes: Rho antibody at 1:1500

Secondary

Goat polyclonal to rabbit IgG at 1:50000 dilution

Predicted band size: 22 kDa

Observed band size: 22 kDa