

RACO0298

Product Information

Size:

50ul

Reactivity:

Human

Source:

Homo sapiens (Human)

Isotype:

Rabbit IgG

Applications:

ELISA, WB

Recommended dilutions:

WB:1:500-1:5000

Protein Background:

Integrins alpha-4/beta-1 (VLA-4) and alpha-4/beta-7 are receptors for fibronectin. They recognize one or more domains within the alternatively spliced CS-1 and CS-5 regions of fibronectin. They are also receptors for VCAM1. Integrin alpha-4/beta-1 recognizes the sequence Q-I-D-S in VCAM1. Integrin alpha-4/beta-7 is also a receptor for MADCAM1. It recognizes the sequence L-D-T in MADCAM1. On activated endothelial cells integrin VLA-4 triggers homotypic aggregation for most VLA-4-positive leukocyte cell lines. It may also participate in cytolytic T-cell interactions with target cells. ITGA4: ITGB1 binds to fractalkine (CX3CL1) and may act as its coreceptor in CX3CR1-dependent fractalkine signaling. ITGA4: ITGB1 binds to PLA2G2A via a site (site 2) which is distinct from the classical ligand-binding site (site 1) and this induces integrin conformational changes and enhanced ligand binding to site 1.

Gene ID:

ITGA4

Uniprot

P13612

Synonyms:

Integrin alpha-4 (CD49 antigen-like family member D) (Integrin alpha-IV) (VLA-4 subunit alpha) (CD antigen CD49d), ITGA4, CD49D

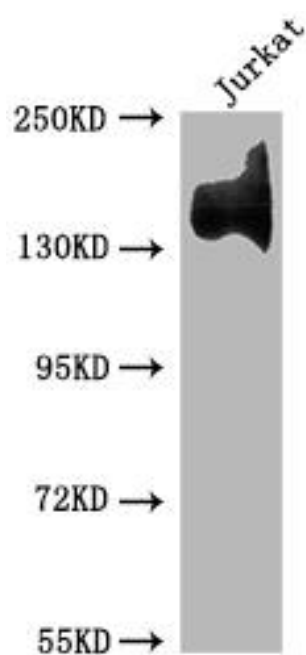
Immunogen:

A synthesized peptide derived from human Integrin alpha 4.

Storage:

Rabbit IgG in phosphate buffered saline, pH 7.4, 150mM NaCl, 0.02% sodium azide and 50% glycerol.

Product Images



Western Blot

Positive WB detected in(Jurkat whole cell lysate) All lanes: ITGA4 antibody at 1:1500

Secondary

Goat polyclonal to rabbit IgG at 1:50000 dilution

Predicted band size: 115, 26 kDa

Observed band size: 140 kDa