

SOD1 Recombinant Antibody



RACO0311

Product Information

Size:

50ul

Reactivity:

Human

Source:

Homo sapiens (Human)

Isotype:

Rabbit IgG

Applications:

ELISA, WB, FC

Recommended dilutions:

WB:1:500-1:5000, FC:1:20-1:200

Protein Background:

Destroys radicals which are normally produced within the cells and which are toxic to biological systems.

Gene ID:

SOD1

Uniprot

P00441

Synonyms:

Superoxide dismutase [Cu-Zn] (EC 1.15.1.1) (Superoxide dismutase 1) (hSod1), SOD1

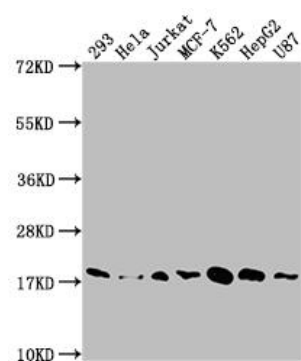
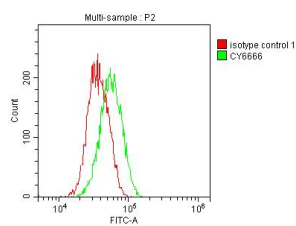
Immunogen:

A synthesized peptide derived from human SOD1.

Storage:

Rabbit IgG in phosphate buffered saline, pH 7.4, 150mM NaCl, 0.02% sodium azide and 50% glycerol.

Product Images



Overlay histogram showing Jurkat cells stained with RACO0311 (red line) at 1:50. The cells were fixed with 70% Ethylalcohol (18h) and then incubated in 10% normal goat serum to block non-specific protein-protein interactions followed by the antibody ($1\mu\text{g}$) 1×10^6 cells for 1 h at 4°C . The secondary antibody used was FITC-conjugated goat anti-rabbit IgG (H+L) at 1/200 dilution for 30min at 4°C . Control antibody (green line) was Rabbit IgG ($1\mu\text{g}$) 1×10^6 cells used under the same conditions. Acquisition of $> 10,000$ events was performed.

Western Blot

Positive WB detected in (293 whole cell lysate) HeLa whole cell lysate) Jurkat whole cell lysate) MCF-7 whole cell lysate) K562 whole cell lysate) HepG2 whole cell lysate) U87 whole cell lysate) All lanes: SOD1 antibody at 1:1500

Secondary

Goat polyclonal to rabbit IgG at 1:50000 dilution

Predicted band size: 16 kDa

Observed band size: 18 kDa