

# DMD Recombinant Antibody



RACO0316

---

## Product Information

**Size:**

50ul

**Reactivity:**

Human

**Source:**

Homo sapiens (Human)

**Isotype:**

Rabbit IgG

**Applications:**

ELISA, IHC

**Recommended dilutions:**

IHC:1:50-1:200

**Protein Background:**

Anchors the extracellular matrix to the cytoskeleton via F-actin. Ligand for dystroglycan. Component of the dystrophin-associated glycoprotein complex which accumulates at the neuromuscular junction (NMJ) and at a variety of synapses in the peripheral and central nervous systems and has a structural function in stabilizing the sarcolemma. Also implicated in signaling events and synaptic transmission.

**Gene ID:**

DMD

**Uniprot**

P11532

**Synonyms:**

Dystrophin, DMD

**Immunogen:**

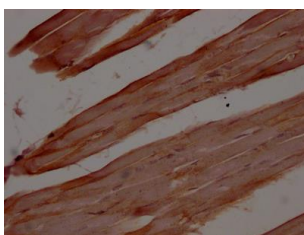
A synthesized peptide derived from human Dystrophin.

**Storage:**

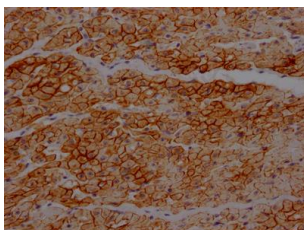
Rabbit IgG in phosphate buffered saline, pH 7.4, 150mM NaCl, 0.02% sodium azide and 50% glycerol.

## Product Images

---



IHC image of RACO0316 diluted at 1:100 and staining in paraffin-embedded human skeletal muscle tissue performed on a Leica Bond™ system. After dewaxing and hydration, antigen retrieval was mediated by high pressure in a citrate buffer (pH 6.0). Section was blocked with 10% normal goat serum 30min at RT. Then primary antibody (1% BSA) was incubated at 4°C overnight. The primary is detected by a Goat anti-rabbit IgG polymer labeled by HRP and visualized using 0.05% DAB.



IHC image of RACO0316 diluted at 1:100 and staining in paraffin-embedded human heart tissue performed on a Leica Bond™ system. After dewaxing and hydration, antigen retrieval was mediated by high pressure in a citrate buffer (pH 6.0). Section was blocked with 10% normal goat serum 30min at RT. Then primary antibody (1% BSA) was incubated at 4°C overnight. The primary is detected by a Goat anti-rabbit IgG polymer labeled by HRP and visualized using 0.05% DAB.