

C3 Recombinant Antibody



RACO0318

Product Information

Size:

50ul

Reactivity:

Human

Source:

Homo sapiens (Human)

Isotype:

Rabbit IgG

Applications:

ELISA, WB, IHC, FC

Recommended dilutions:

WB:1:500-1:5000, IHC:1:50-1:200, FC:1:20-1:200

Protein Background:

C3 plays a central role in the activation of the complement system. Its processing by C3 convertase is the central reaction in both classical and alternative complement pathways. After activation C3b can bind covalently, via its reactive thioester, to cell surface carbohydrates or immune aggregates.

Gene ID:

C3

Uniprot

P01024

Synonyms:

Complement C3 (C3 and PZP-like alpha-2-macroglobulin domain-containing protein 1) [Cleaved into: Complement C3 beta chain, C3-beta-c (C3bc), Complement C3 alpha chain, C3a anaphylatoxin, Acylation stimulating protein (ASP) (C3adesArg), Complement C3b alpha' chain, Complement C3c alpha' chain fragment 1, Complement C3dg fragment, Complement C3g fragment, Complement C3d fragment

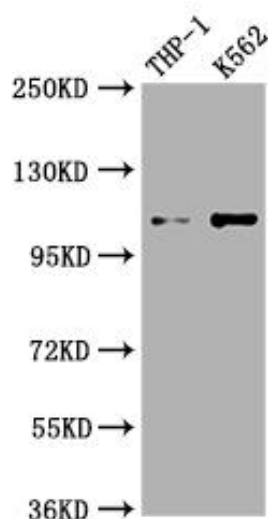
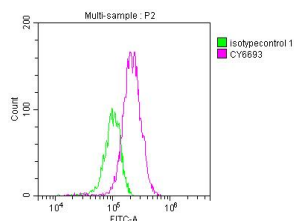
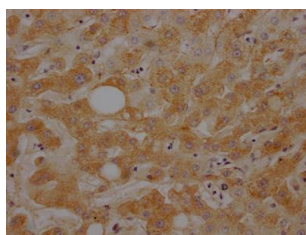
Immunogen:

A synthesized peptide derived from human C3.

Storage:

Rabbit IgG in phosphate buffered saline, pH 7.4, 150mM NaCl, 0.02% sodium azide and 50% glycerol.

Product Images



IHC image of RACO0318 diluted at 1:100 and staining in paraffin-embedded human liver tissue performed on a Leica BondTM system. After dewaxing and hydration, antigen retrieval was mediated by high pressure in a citrate buffer (pH 6.0). Section was blocked with 10% normal goat serum 30min at RT. Then primary antibody (1% BSA) was incubated at 4°C overnight. The primary is detected by a Goat anti-rabbit IgG polymer labeled by HRP and visualized using 0.05% DAB.

Overlay histogram showing HepG2 cells stained with RACO0318 (red line) at 1:50. The cells were fixed with 70% Ethylalcohol (18h) and then incubated in 10% normal goat serum to block non-specific protein-protein interactions followed by the antibody (1µg)1*10⁶cells for 1 h at 4°C. The secondary antibody used was FITC-conjugated goat anti-rabbit IgG (H+L) at 1/200 dilution for 30min at 4°C. Control antibody (green line) was Rabbit IgG (1µg)1*10⁶cells used under the same conditions. Acquisition of >10,000 events was performed.

Western Blot

Positive WB detected in(THP-1 whole cell lysate) K562 whole cell lysate)

All lanes: C3 antibody at 1:1000

Secondary

Goat polyclonal to rabbit IgG at 1:50000 dilution

Predicted band size: 188 kDa

Observed band size: 115 kDa