

RACO0321

Product Information

Size:

50ul

Reactivity:

Human

Source:

Homo sapiens (Human)

Isotype:

Rabbit IgG

Applications:

ELISA, WB

Recommended dilutions:

WB:1:500-1:5000

Protein Background:

PPIases accelerate the folding of proteins. It catalyzes the cis-trans isomerization of proline imidic peptide bonds in oligopeptides.

Gene ID:

PPIA

Uniprot

P62937

Synonyms:

Peptidyl-prolyl cis-trans isomerase A (PPIase A) (EC 5.2.1.8) (Cyclophilin A) (Cyclosporin A-binding protein) (Rotamase A) [Cleaved into: Peptidyl-prolyl cis-trans isomerase A, N-terminally processed], PPIA, CYPA

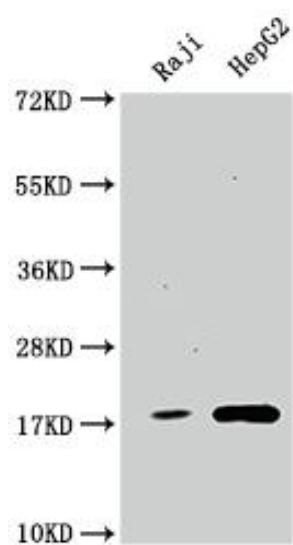
Immunogen:

A synthesized peptide derived from human Cyclophilin A.

Storage:

Rabbit IgG in phosphate buffered saline, pH 7.4, 150mM NaCl, 0.02% sodium azide and 50% glycerol.

Product Images



Western Blot

Positive WB detected in(Raji whole cell lysate) HepG2 whole cell lysate)

All lanes: Cyclophilin A antibody at 1:1500

Secondary

Goat polyclonal to rabbit IgG at 1:50000 dilution

Predicted band size: 19, 12 kDa

Observed band size: 19 kDa