

RACO0322

Product Information

Size:

50ul

Reactivity:

Human

Source:

Homo sapiens (Human)

Isotype:

Rabbit IgG

Applications:

ELISA, WB

Recommended dilutions:

WB:1:500-1:5000

Protein Background:

Extracellular exosome, lysosomal lumen, lysosomal membrane, glucosylceramidase activity, receptor binding, cellular response to tumor necrosis factor, ceramide biosynthetic process, glucosylceramide catabolic process, glycosphingolipid metabolic process, negative regulation of inflammatory response.

Gene ID:

GBA

Uniprot

P04062

Synonyms:

Glucosylceramidase (EC 3.2.1.45) (Acid beta-glucosidase) (Aglucerase) (Beta-glucocerebrosidase) (Beta-GC) (D-glucosyl-N-acylsphingosine glucohydrolase) (Imiglucerase), GBA, GC GLUC

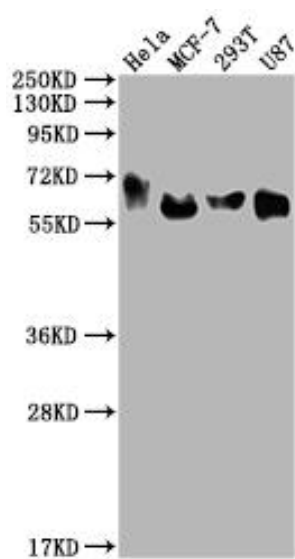
Immunogen:

A synthesized peptide derived from human GBA.

Storage:

Rabbit IgG in phosphate buffered saline, pH 7.4, 150mM NaCl, 0.02% sodium azide and 50% glycerol.

Product Images



Western Blot

Positive WB detected in(HeLa whole cell lysate) MCF-7 whole cell lysate) 293T whole cell lysate) U87 whole cell lysate) All lanes: GBA antibody at 1:2000

Secondary

Goat polyclonal to rabbit IgG at 1:50000 dilution

Predicted band size: 60, 58, 55, 51, 30 kDa

Observed band size: 60 kDa