

CXCL10 Recombinant Antibody



RACO0325

Product Information

Size:

50ul

Reactivity:

Human

Source:

Homo sapiens (Human)

Isotype:

Rabbit IgG

Applications:

ELISA, IHC

Recommended dilutions:

IHC:1:50-1:200

Protein Background:

Chemotactic for monocytes and T-lymphocytes. Binds to CXCR3.

Gene ID:

CXCL10

Uniprot

P02778

Synonyms:

C-X-C motif chemokine 10 (10 kDa interferon gamma-induced protein) (Gamma-IP10) (IP-10) (Small-inducible cytokine B10) [Cleaved into: CXCL10(1-73)], CXCL10, INP10, SCYB10

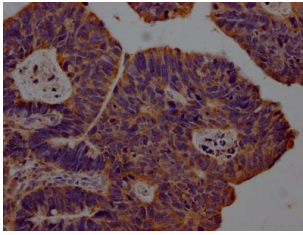
Immunogen:

A synthesized peptide derived from human IP10.

Storage:

Rabbit IgG in phosphate buffered saline, pH 7.4, 150mM NaCl, 0.02% sodium azide and 50% glycerol.

Product Images



IHC image of RACO0325 diluted at 1:100 and staining in paraffin-embedded human ovarian cancer performed on a Leica Bond™ system. After dewaxing and hydration, antigen retrieval was mediated by high pressure in a citrate buffer (pH 6.0). Section was blocked with 10% normal goat serum 30min at RT. Then primary antibody (1% BSA) was incubated at 4°C overnight. The primary is detected by a Goat anti-rabbit IgG polymer labeled by HRP and visualized using 0.05% DAB.