

RACO0339

Product Information

Size:

50ul

Reactivity:

Human

Source:

Homo sapiens (Human)

Isotype:

Rabbit IgG

Applications:

ELISA, WB

Recommended dilutions:

WB:1:500-1:5000

Protein Background:

Pro-inflammatory cytokine. Involved in the innate immune response to bacterial pathogens. The expression of MIF at sites of inflammation suggests a role as mediator in regulating the function of macrophages in host defense. Counteracts the anti-inflammatory activity of glucocorticoids. Has phenylpyruvate tautomerase and dopachrome tautomerase activity (in vitro), but the physiological substrate is not known. It is not clear whether the tautomerase activity has any physiological relevance, and whether it is important for cytokine activity.

Gene ID:

MIF

Uniprot

P14174

Synonyms:

Macrophage migration inhibitory factor (MIF) (EC 5.3.2.1) (Glycosylation-inhibiting factor) (GIF) (L-dopachrome isomerase) (L-dopachrome tautomerase) (EC 5.3.3.12) (Phenylpyruvate tautomerase), MIF, GLIF MMIF

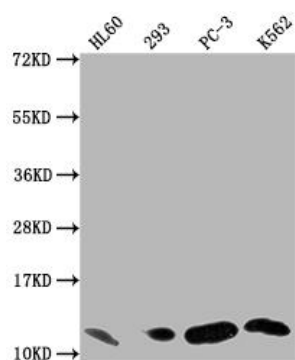
Immunogen:

A synthesized peptide derived from human MIF.

Storage:

Rabbit IgG in phosphate buffered saline, pH 7.4, 150mM NaCl, 0.02% sodium azide and 50% glycerol.

Product Images



Western Blot

Positive WB detected in(HL60 whole cell lysate) 293 whole cell lysate)
PC-3 whole cell lysate) K562 whole cell lysate) All lanes: MIF antibody
at 1:1500

Secondary

Goat polyclonal to rabbit IgG at 1:50000 dilution

Predicted band size: 13 kDa

Observed band size: 13 kDa