

SDHB Recombinant Antibody



RACO0342

Product Information

Size:

50ul

Reactivity:

Human, Mouse, Rat

Source:

Homo sapiens (Human)

Isotype:

Rabbit IgG

Applications:

ELISA, WB, IHC, FC

Recommended dilutions:

WB:1:500-1:5000, IHC:1:50-1:200, FC:1:20-1:200

Protein Background:

Iron-sulfur protein (IP) subunit of succinate dehydrogenase (SDH) that is involved in complex II of the mitochondrial electron transport chain and is responsible for transferring electrons from succinate to ubiquinone (coenzyme Q).

Gene ID:

SDHB

Uniprot

P21912

Synonyms:

Succinate dehydrogenase [ubiquinone] iron-sulfur subunit, mitochondrial (EC 1.3.5.1) (Iron-sulfur subunit of complex II) (Ip), SDHB, SDH SDH1

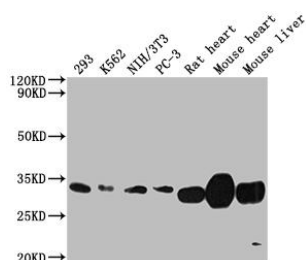
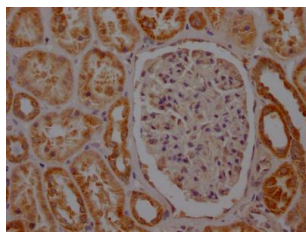
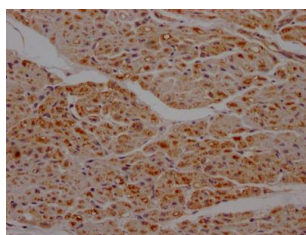
Immunogen:

A synthesized peptide derived from human SDHB.

Storage:

Rabbit IgG in phosphate buffered saline, pH 7.4, 150mM NaCl, 0.02% sodium azide and 50% glycerol.

Product Images



IHC image of RACO0342 diluted at 1:100 and staining in paraffin-embedded human heart tissue performed on a Leica Bond™ system. After dewaxing and hydration, antigen retrieval was mediated by high pressure in a citrate buffer (pH 6.0). Section was blocked with 10% normal goat serum 30min at RT. Then primary antibody (1% BSA) was incubated at 4°C overnight. The primary is detected by a Goat anti-rabbit IgG polymer labeled by HRP and visualized using 0.05% DAB.

IHC image of RACO0342 diluted at 1:100 and staining in paraffin-embedded human kidney tissue performed on a Leica Bond™ system. After dewaxing and hydration, antigen retrieval was mediated by high pressure in a citrate buffer (pH 6.0). Section was blocked with 10% normal goat serum 30min at RT. Then primary antibody (1% BSA) was incubated at 4°C overnight. The primary is detected by a Goat anti-rabbit IgG polymer labeled by HRP and visualized using 0.05% DAB.

Western Blot

Positive WB detected in(293 whole cell lysate) K562 whole cell lysate) NIH/3T3 whole cell lysate) PC-3 whole cell lysate) Rat heart tissue, Mouse heart tissue, Mouse liver tissue

All lanes: SDHB antibody at 1:2000

Secondary

Goat polyclonal to rabbit IgG at 1:50000 dilution

Predicted band size: 32 kDa

Observed band size: 32 kDa