

RACO0346

Product Information

Size:

50ul

Reactivity:

Human

Source:

Homo sapiens (Human)

Isotype:

Rabbit IgG

Applications:

ELISA, WB, FC

Recommended dilutions:

WB:1:500-1:5000, FC:1:20-1:200

Protein Background:

Essential component of the mitotic checkpoint. Required for normal mitosis progression. The mitotic checkpoint delays anaphase until all chromosomes are properly attached to the mitotic spindle. One of its checkpoint functions is to inhibit the activity of the anaphase-promoting complex/cyclosome (APC/C) by blocking the binding of CDC20 to APC/C, independently of its kinase activity. The other is to monitor kinetochore activities that depend on the kinetochore motor CENPE. Required for kinetochore localization of CENPE. Negatively regulates PLK1 activity in interphase cells and suppresses centrosome amplification. Also implicated in triggering apoptosis in polyploid cells that exit aberrantly from mitotic arrest. May play a role for tumor suppression.

Gene ID:

BUB1B

Uniprot

O60566

Synonyms:

Mitotic checkpoint serine/threonine-protein kinase BUB1 beta (EC 2.7.11.1) (MAD3/BUB1-related protein kinase) (hBUBR1) (Mitotic checkpoint kinase MAD3L) (Protein SSK1), BUB1B, BUBR1 MAD3L SSK1

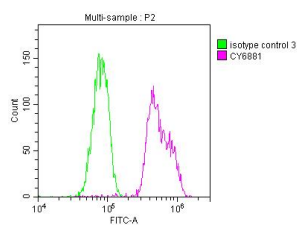
Immunogen:

A synthesized peptide derived from human BubR1.

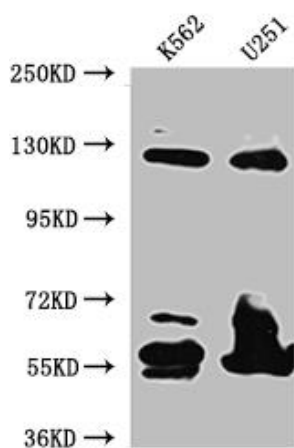
Storage:

Rabbit IgG in phosphate buffered saline, pH 7.4, 150mM NaCl, 0.02% sodium azide and 50% glycerol.

Product Images



Overlay histogram showing HeLa cells stained with RACO0346 (red line) at 1:50. The cells were fixed with 70% Ethylalcohol (18h) and then incubated in 10% normal goat serum to block non-specific protein-protein interactions followed by the antibody ($1\mu\text{g}$) 1×10^6 cells for 1 h at 4°C . The secondary antibody used was FITC-conjugated goat anti-rabbit IgG (H+L) at 1/200 dilution for 30min at 4°C . Control antibody (green line) was Rabbit IgG ($1\mu\text{g}$) 1×10^6 cells) used under the same conditions. Acquisition of $>10,000$ events was performed.



Western Blot

Positive WB detected in (K562 whole cell lysate) U-251 whole cell lysate)

All lanes: BubR1 antibody at 1:1000

Secondary

Goat polyclonal to rabbit IgG at 1:50000 dilution

Predicted band size: 120, 106, 122 kDa

Observed band size: 125 kDa