

TPT1 Recombinant Antibody



RACO0363

Product Information

Size:

50ul

Reactivity:

Human, Mouse

Source:

Homo sapiens (Human)

Isotype:

Rabbit IgG

Applications:

ELISA, WB, IHC, IF, IP

Recommended dilutions:

WB:1:500-1:5000, IHC:1:50-1:200, IF:1:20-1:200, IP:1:200-1:1000

Protein Background:

Involved in calcium binding and microtubule stabilization.

Gene ID:

TPT1

Uniprot

P13693

Synonyms:

Translationally-controlled tumor protein (TCTP) (Fortilin) (Histamine-releasing factor) (HRF) (p23), TPT1

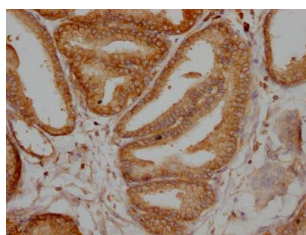
Immunogen:

A synthesized peptide derived from human TCTP.

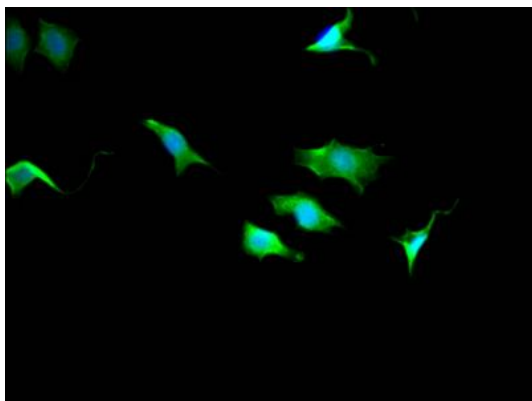
Storage:

Rabbit IgG in phosphate buffered saline, pH 7.4, 150mM NaCl, 0.02% sodium azide and 50% glycerol.

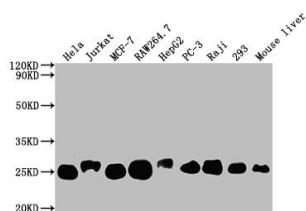
Product Images



IHC image of RACO0363 diluted at 1:100 and staining in paraffin-embedded human prostate tissue performed on a Leica Bond™ system. After dewaxing and hydration, antigen retrieval was mediated by high pressure in a citrate buffer (pH 6.0). Section was blocked with 10% normal goat serum 30min at RT. Then primary antibody (1% BSA) was incubated at 4°C overnight. The primary is detected by a Goat anti-rabbit IgG polymer labeled by HRP and visualized using 0.05% DAB.



Immunofluorescence staining of SY5Y Cells with RACO0363 at 1:50, counter-stained with DAPI. The cells were fixed in 4% formaldehyde, permeated by 0.2% TritonX-100, and blocked in 10% normal Goat Serum. The cells were then incubated with the antibody overnight at 4°C. Nuclear DNA was labeled in blue with DAPI. The secondary antibody was FITC-conjugated AffiniPure Goat Anti-Rabbit IgG (H+L).



Western Blot

Positive WB detected in(HeLa whole cell lysate) Jurkat whole cell lysate) MCF-7 whole cell lysate) RAW264.7 whole cell lysate) HepG2 whole cell lysate) PC-3 whole cell lysate) Raji whole cell lysate) 293 whole cell lysate) Mouse liver tissue

All lanes: TPT1 antibody at 1:2000

Secondary

Goat polyclonal to rabbit IgG at 1:50000 dilution

Predicted band size: 20, 16 kDa

Observed band size: 25 kDa