

RACO0367

Product Information

Size:

50ul

Reactivity:

Human, Mouse, Rat

Source:

Homo sapiens (Human)

Isotype:

Rabbit IgG

Applications:

ELISA, WB, IF

Recommended dilutions:

WB:1:500-1:5000, IF:1:20-1:200

Protein Background:

Protein kinase which is a key regulator of actin cytoskeleton and cell polarity. Involved in regulation of smooth muscle contraction, actin cytoskeleton organization, stress fiber and focal adhesion formation, neurite retraction, cell adhesion and motility via phosphorylation of ADD1, BRCA2, CNN1, EZR, DPYSL2, EP300, MSN, MYL9/MLC2, NPM1, RDX, PPP1R12A and VIM. Phosphorylates SORL1 and IRF4. Acts as a negative regulator of VEGF-induced angiogenic endothelial cell activation. Positively regulates the activation of p42/MAPK1-p44/MAPK3 and of p90RSK/RPS6KA1 during myogenic differentiation. Plays an important role in the timely initiation of centrosome duplication.

Gene ID:

ROCK2

Uniprot

O75116

Synonyms:

Rho-associated protein kinase 2 (EC 2.7.11.1) (Rho kinase 2) (Rho-associated, coiled-coil-containing protein kinase 2) (Rho-associated, coiled-coil-containing protein kinase II) (ROCK-II) (p164 ROCK-2), ROCK2, KIAA0619

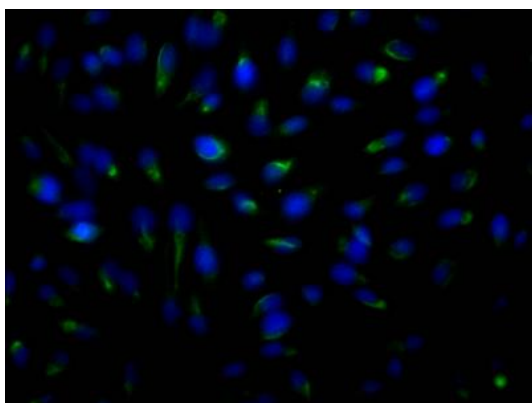
Immunogen:

A synthesized peptide derived from human ROCK2.

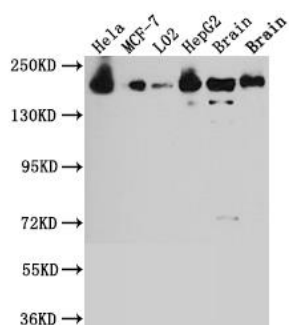
Storage:

Rabbit IgG in phosphate buffered saline, pH 7.4, 150mM NaCl, 0.02% sodium azide and 50% glycerol.

Product Images



Immunofluorescence staining of HeLa Cells with RACO0367 at 1:50, counter-stained with DAPI. The cells were fixed in 4% formaldehyde, permeated by 0.2% TritonX-100, and blocked in 10% normal Goat Serum. The cells were then incubated with the antibody overnight at 4°C. Nuclear DNA was labeled in blue with DAPI. The secondary antibody was FITC-conjugated AffiniPure Goat Anti-Rabbit IgG (H+L).



Western Blot

Positive WB detected in(HeLa whole cell lysate) MCF-7 whole cell lysate) L02 whole cell lysate) HepG2 whole cell lysate) Mouse Brain whole cell lysate) Rat Brain whole cell lysate) All lanes: ROCK2 antibody at 1:1000 Secondary

Goat polyclonal to rabbit IgG at 1:50000 dilution

Predicted band size: 161 kDa

Observed band size: 161 kDa