

BCHE Recombinant Antibody



RACO0375

Product Information

Size:

50ul

Reactivity:

Human

Source:

Homo sapiens (Human)

Isotype:

Rabbit IgG

Applications:

ELISA, WB

Recommended dilutions:

WB:1:500-1:5000

Protein Background:

Esterase with broad substrate specificity. Contributes to the inactivation of the neurotransmitter acetylcholine. Can degrade neurotoxic organophosphate esters.

Gene ID:

BCHE

Uniprot

P06276

Synonyms:

Cholinesterase (EC 3.1.1.8) (Acylocholine acylhydrolase) (Butyrylcholine esterase) (Choline esterase II) (Pseudocholinesterase), BCHE, CHE1

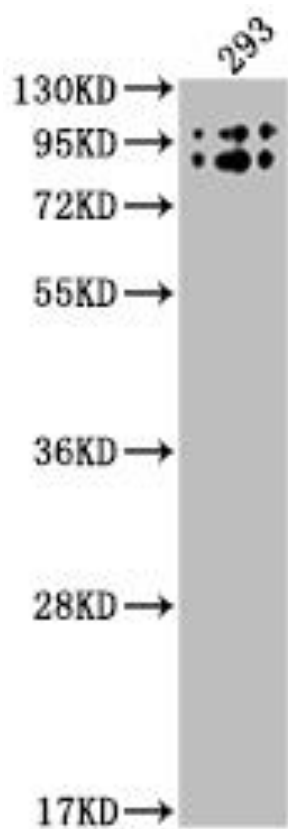
Immunogen:

A synthesized peptide derived from human BCHE.

Storage:

Rabbit IgG in phosphate buffered saline, pH 7.4, 150mM NaCl, 0.02% sodium azide and 50% glycerol.

Product Images



Western Blot

Positive WB detected in(293 whole cell lysate) All lanes: BCHE antibody at 1:2000

Secondary

Goat polyclonal to rabbit IgG at 1:50000 dilution

Predicted band size: 69 kDa

Observed band size: 90 kDa