

# KIF11 Recombinant Antibody



RACO0377

---

## Product Information

**Size:**

50ul

**Reactivity:**

Human

**Source:**

Homo sapiens (Human)

**Isotype:**

Rabbit IgG

**Applications:**

ELISA, WB

**Recommended dilutions:**

WB:1:500-1:5000

**Protein Background:**

Motor protein required for establishing a bipolar spindle during mitosis . Required in non-mitotic cells for transport of secretory proteins from the Golgi complex to the cell surface .

**Gene ID:**

KIF11

**Uniprot**

P52732

**Synonyms:**

Kinesin-like protein KIF11 (Kinesin-like protein 1) (Kinesin-like spindle protein HKSP) (Kinesin-related motor protein Eg5) (Thyroid receptor-interacting protein 5) (TR-interacting protein 5) (TRIP-5), KIF11, EG5 KNSL1 TRIP5

**Immunogen:**

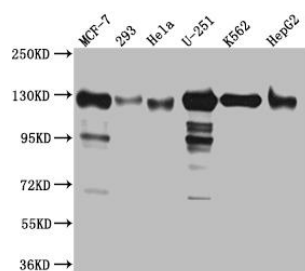
A synthesized peptide derived from human Eg5.

**Storage:**

Rabbit IgG in phosphate buffered saline, pH 7.4, 150mM NaCl, 0.02% sodium azide and 50% glycerol.

## Product Images

---



### Western Blot

Positive WB detected in( MCF-7 whole cell lysate) 293 whole cell lysate)  
Hela whole cell lysate) U-251 whole cell lysate) K562 whole cell lysate)  
HepG2 whole cell lysat

All lanes: Eg5 Antibody at 1:1000

Secondary

Goat polyclonal to rabbit IgG at 1:50000 dilution

Predicted band size: 120 kDa

Observed band size: 130 kDa