

RACO0401

---

## Product Information

**Size:**

50ul

**Reactivity:**

Human

**Source:**

Homo sapiens (Human)

**Isotype:**

Rabbit IgG

**Applications:**

ELISA, WB, IHC, IF

**Recommended dilutions:**

WB:1:500-1:5000, IHC:1:50-1:200, IF:1:20-1:200

**Protein Background:**

Has a role in both cell adhesion by acting as an adhesion receptor for THBS1 on platelets, and in the modulation of integrins. Plays an important role in memory formation and synaptic plasticity in the hippocampus (By similarity). Receptor for SIRPA, binding to which prevents maturation of immature dendritic cells and inhibits cytokine production by mature dendritic cells. Interaction with SIRPG mediates cell-cell adhesion, enhances superantigen-dependent T-cell-mediated proliferation and costimulates T-cell activation. May play a role in membrane transport and/or integrin dependent signal transduction. May prevent premature elimination of red blood cells. May be involved in membrane permeability changes induced following virus infection.

**Gene ID:**

CD47

**Uniprot**

Q08722

**Synonyms:**

Leukocyte surface antigen CD47 (Antigenic surface determinant protein OA3) (Integrin-associated protein) (IAP) (Protein MER6) (CD antigen CD47), CD47, MER6

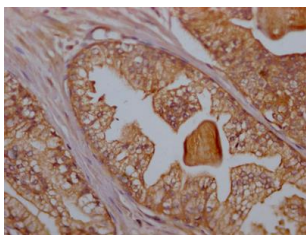
**Immunogen:**

A synthesized peptide derived from human CD47.

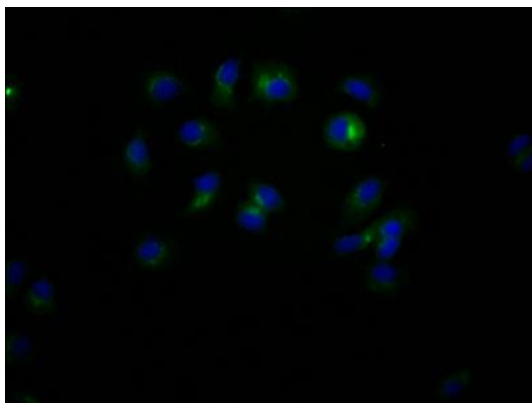
**Storage:**

Rabbit IgG in phosphate buffered saline, pH 7.4, 150mM NaCl, 0.02% sodium azide and 50% glycerol.

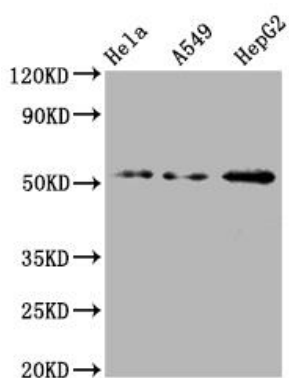
## Product Images



IHC image of RACO0401 diluted at 1:100 and staining in paraffin-embedded human prostate cancer performed on a Leica Bond™ system. After dewaxing and hydration, antigen retrieval was mediated by high pressure in a citrate buffer (pH 6.0). Section was blocked with 10% normal goat serum 30min at RT. Then primary antibody (1% BSA) was incubated at 4°C overnight. The primary is detected by a Goat anti-rabbit IgG polymer labeled by HRP and visualized using 0.05% DAB.



Immunofluorescence staining of MCF7 Cells with RACO0401 at 1:50, counter-stained with DAPI. The cells were fixed in 4% formaldehyde, permeated by 0.2% TritonX-100, and blocked in 10% normal Goat Serum. The cells were then incubated with the antibody overnight at 4°C. Nuclear DNA was labeled in blue with DAPI. The secondary antibody was FITC-conjugated AffiniPure Goat Anti-Rabbit IgG (H+L).



### Western Blot

Positive WB detected in ( HeLa whole cell lysate) (A549 whole cell lysate) (HepG2 whole cell lysate) All lanes: CD47 antibody at 1:2000

Secondary

Goat polyclonal to rabbit IgG at 1:50000 dilution

Predicted band size: 36, 32, 34 kDa

Observed band size: 55 kDa