

ALDOA Recombinant Antibody



RACO0422

Product Information

Size:

50ul

Reactivity:

Human, Mouse, Rat

Source:

Homo sapiens (Human)

Isotype:

Rabbit IgG

Applications:

ELISA, WB, IHC, IF

Recommended dilutions:

WB:1:500-1:5000, IHC:1:50-1:200, IF:1:20-1:200

Protein Background:

Plays a key role in glycolysis and gluconeogenesis. In addition, may also function as scaffolding protein (By similarity).

Gene ID:

ALDOA

Uniprot

P04075

Synonyms:

Fructose-bisphosphate aldolase A (EC 4.1.2.13) (Lung cancer antigen NY-LU-1) (Muscle-type aldolase), ALDOA, ALDA

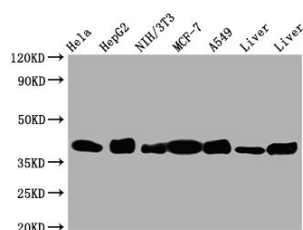
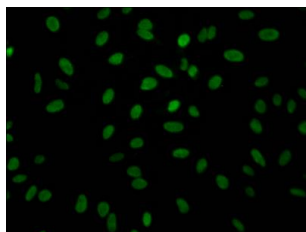
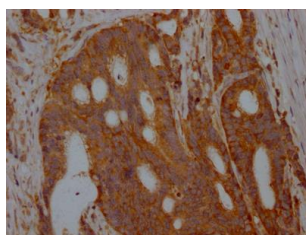
Immunogen:

A synthesized peptide derived from human Aldolase.

Storage:

Rabbit IgG in phosphate buffered saline, pH 7.4, 150mM NaCl, 0.02% sodium azide and 50% glycerol.

Product Images



IHC image of RACO0422 diluted at 1:100 and staining in paraffin-embedded human colon cancer performed on a Leica Bond™ system. After dewaxing and hydration, antigen retrieval was mediated by high pressure in a citrate buffer (pH 6.0). Section was blocked with 10% normal goat serum 30min at RT. Then primary antibody (1% BSA) was incubated at 4°C overnight. The primary is detected by a Goat anti-rabbit IgG polymer labeled by HRP and visualized using 0.05% DAB.

Immunofluorescence staining of HeLa Cells with RACO0422 at 1:50, counter-stained with DAPI. The cells were fixed in 4% formaldehyde, permeated by 0.2% TritonX-100, and blocked in 10% normal Goat Serum. The cells were then incubated with the antibody overnight at 4°C. Nuclear DNA was labeled in blue with DAPI. The secondary antibody was FITC-conjugated AffiniPure Goat Anti-Rabbit IgG (H+L).

Western Blot

Positive WB detected in(HeLa whole cell lysate) HepG2 whole cell lysate) NIH/3T3 whole cell lysate) A549 whole cell lysate) Mouse Liver whole cell lysate) Rat Liver whole cell lysate) All lanes: Aldolase antibody at 1:1000

Secondary

Goat polyclonal to rabbit IgG at 1:50000 dilution

Predicted band size: 40, 46 kDa

Observed band size: 40 kDa