

RACO0429

---

## Product Information

**Size:**

50ul

**Reactivity:**

Human

**Source:**

Homo sapiens (Human)

**Isotype:**

Rabbit IgG

**Applications:**

ELISA, IHC

**Recommended dilutions:**

IHC:1:50-1:200

**Protein Background:**

C3 plays a central role in the activation of the complement system. Its processing by C3 convertase is the central reaction in both classical and alternative complement pathways. After activation C3b can bind covalently, via its reactive thioester, to cell surface carbohydrates or immune aggregates.

**Gene ID:**

C3

**Uniprot**

P01024

**Synonyms:**

Complement C3 (C3 and PZP-like alpha-2-macroglobulin domain-containing protein 1) [Cleaved into: Complement C3 beta chain, C3-beta-c (C3bc), Complement C3 alpha chain, C3a anaphylatoxin, Acylation stimulating protein (ASP) (C3adesArg), Complement C3b alpha' chain, Complement C3c alpha' chain fragment 1

**Immunogen:**

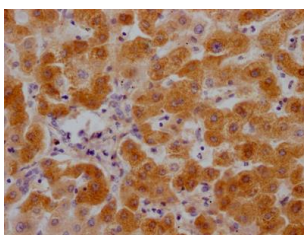
A synthesized peptide derived from human C3 / C3a.

**Storage:**

Rabbit IgG in phosphate buffered saline, pH 7.4, 150mM NaCl, 0.02% sodium azide and 50% glycerol.

## Product Images

---



IHC image of RACO0429 diluted at 1:100 and staining in paraffin-embedded human liver tissue performed on a Leica Bond™ system. After dewaxing and hydration, antigen retrieval was mediated by high pressure in a citrate buffer (pH 6.0). Section was blocked with 10% normal goat serum 30min at RT. Then primary antibody (1% BSA) was incubated at 4°C overnight. The primary is detected by a Goat anti-rabbit IgG polymer labeled by HRP and visualized using 0.05% DAB.