

# GDF15 Recombinant Antibody



RACO0431

---

## Product Information

**Size:**

50ul

**Reactivity:**

Human

**Source:**

Homo sapiens (Human)

**Isotype:**

Rabbit IgG

**Applications:**

ELISA, IHC

**Recommended dilutions:**

IHC:1:50-1:200

**Protein Background:**

Cytoplasm, extracellular exosome, extracellular region, extracellular space, nucleus, cytokine activity, transforming growth factor beta receptor binding, BMP signaling pathway, cell development, cell-cell signaling.

**Gene ID:**

GDF15

**Uniprot**

Q99988

**Synonyms:**

Growth/differentiation factor 15 (GDF-15) (Macrophage inhibitory cytokine 1) (MIC-1) (NSAID-activated gene 1 protein) (NAG-1) (NSAID-regulated gene 1 protein) (NRG-1) (Placental TGF-beta) (Placental bone morphogenetic protein) (Prostate differentiation factor), GDF15, MIC1 PDF PLAB PTGFB

**Immunogen:**

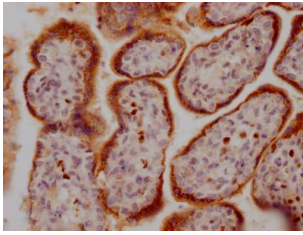
A synthesized peptide derived from human GDF15.

**Storage:**

Rabbit IgG in phosphate buffered saline, pH 7.4, 150mM NaCl, 0.02% sodium azide and 50% glycerol.

## Product Images

---



IHC image of RACO0431 diluted at 1:100 and staining in paraffin-embedded human placenta tissue performed on a Leica Bond™ system. After dewaxing and hydration, antigen retrieval was mediated by high pressure in a citrate buffer (pH 6.0). Section was blocked with 10% normal goat serum 30min at RT. Then primary antibody (1% BSA) was incubated at 4°C overnight. The primary is detected by a Goat anti-rabbit IgG polymer labeled by HRP and visualized using 0.05% DAB.