

CR1 Recombinant Antibody



RACO0435

Product Information

Size:

50ul

Reactivity:

Human

Source:

Homo sapiens (Human)

Isotype:

Rabbit IgG

Applications:

ELISA, IHC

Recommended dilutions:

IHC:1:50-1:200

Protein Background:

Mediates cellular binding of particles and immune complexes that have activated complement.

Gene ID:

CR1

Uniprot

P17927

Synonyms:

Complement receptor type 1 (C3b/C4b receptor) (CD antigen CD35), CR1, C3BR

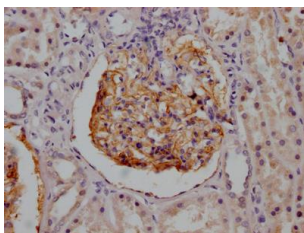
Immunogen:

A synthesized peptide derived from human CD35.

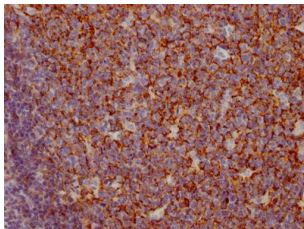
Storage:

Rabbit IgG in phosphate buffered saline, pH 7.4, 150mM NaCl, 0.02% sodium azide and 50% glycerol.

Product Images



IHC image of RACO0435 diluted at 1:100 and staining in paraffin-embedded human kidney tissue performed on a Leica Bond™ system. After dewaxing and hydration, antigen retrieval was mediated by high pressure in a citrate buffer (pH 6.0). Section was blocked with 10% normal goat serum 30min at RT. Then primary antibody (1% BSA) was incubated at 4°C overnight. The primary is detected by a Goat anti-rabbit IgG polymer labeled by HRP and visualized using 0.05% DAB.



IHC image of RACO0435 diluted at 1:100 and staining in paraffin-embedded human tonsil tissue performed on a Leica Bond™ system. After dewaxing and hydration, antigen retrieval was mediated by high pressure in a citrate buffer (pH 6.0). Section was blocked with 10% normal goat serum 30min at RT. Then primary antibody (1% BSA) was incubated at 4°C overnight. The primary is detected by a Goat anti-rabbit IgG polymer labeled by HRP and visualized using 0.05% DAB.