

# BUB1 Recombinant Antibody



RACO0437

---

## Product Information

**Size:**

50ul

**Reactivity:**

Human

**Source:**

Homo sapiens (Human)

**Isotype:**

Rabbit IgG

**Applications:**

ELISA, WB

**Recommended dilutions:**

WB:1:500-1:5000

**Protein Background:**

Serine/threonine-protein kinase that performs 2 crucial functions during mitosis: it is essential for spindle-assembly checkpoint signaling and for correct chromosome alignment. Has a key role in the assembly of checkpoint proteins at the kinetochore, being required for the subsequent localization of CENPF, BUB1B, CENPE and MAD2L1. Required for the kinetochore localization of PLK1. Required for centromeric enrichment of AUKRB in prometaphase. Plays an important role in defining SGO1 localization and thereby affects sister chromatid cohesion.

**Gene ID:**

BUB1

**Uniprot**

O43683

**Synonyms:**

Mitotic checkpoint serine/threonine-protein kinase BUB1 (hBUB1) (EC 2.7.11.1) (BUB1A), BUB1, BUB1L

**Immunogen:**

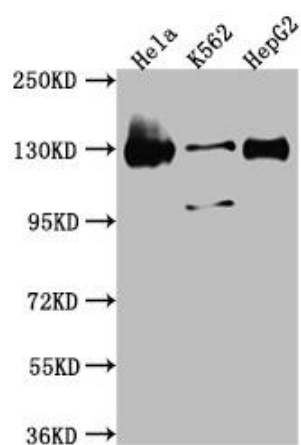
A synthesized peptide derived from human Bub1.

**Storage:**

Rabbit IgG in phosphate buffered saline, pH 7.4, 150mM NaCl, 0.02% sodium azide and 50% glycerol.

## Product Images

---



### Western Blot

Positive WB detected in( HeLa whole cell lysate) K562 whole cell lysate)

HepG2 whole cell lysate) All lanes: Bub1 antibody at 1:1000

Secondary

Goat polyclonal to rabbit IgG at 1:50000 dilution

Predicted band size: 123, 116, 120 kDa

Observed band size: 130 kDa