

RACO0446

Product Information

Size:

50ul

Reactivity:

Human

Source:

Homo sapiens (Human)

Isotype:

Rabbit IgG

Applications:

ELISA, WB

Recommended dilutions:

WB:1:500-1:5000

Protein Background:

Participates in the innate immune response to microbial agents. Mediates detection of bacterial flagellins. Acts via MYD88 and TRAF6, leading to NF-kappa-B activation, cytokine secretion and the inflammatory response.

Gene ID:

TLR5

Uniprot

O60602

Synonyms:

Toll-like receptor 5 (Toll/interleukin-1 receptor-like protein 3), TLR5, TIL3

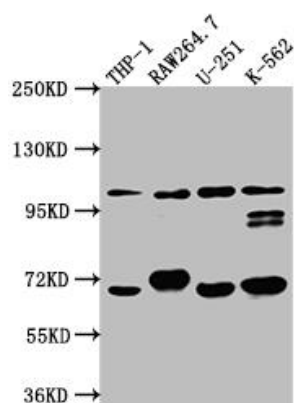
Immunogen:

A synthesized peptide derived from human TLR5.

Storage:

Rabbit IgG in phosphate buffered saline, pH 7.4, 150mM NaCl, 0.02% sodium azide and 50% glycerol.

Product Images



Western Blot

Positive WB detected in(THP-1 whole cell lysate) RAW264.7 whole cell lysate) U-251 whole cell lysate) K562 whole cell lysate) All lanes: TLR5 antibody at 1:1000

Secondary

Goat polyclonal to rabbit IgG at 1:50000 dilution

Predicted band size: 98 kDa

Observed band size: 98 kDa