

RACO0449

Product Information

Size:

50ul

Reactivity:

Human

Source:

Homo sapiens (Human)

Isotype:

Rabbit IgG

Applications:

ELISA, IHC

Recommended dilutions:

IHC:1:50-1:200

Protein Background:

Thermolysin-like specificity, but is almost confined on acting on polypeptides of up to 30 amino acids . Biologically important in the destruction of opioid peptides such as Met- and Leu-enkephalins by cleavage of a Gly-Phe bond . Able to cleave angiotensin-1, angiotensin-2 and angiotensin 1-9 . Involved in the degradation of atrial natriuretic factor (ANF) . Displays UV-inducible elastase activity toward skin preelastic and elastic fibers .

Gene ID:

MME

Uniprot

P08473

Synonyms:

Nepriylsin (EC 3.4.24.11) (Atriopeptidase) (Common acute lymphocytic leukemia antigen) (CALLA) (Enkephalinase) (Neutral endopeptidase 24.11) (NEP) (Neutral endopeptidase) (Skin fibroblast elastase) (SFE) (CD antigen CD10), MME, EPN

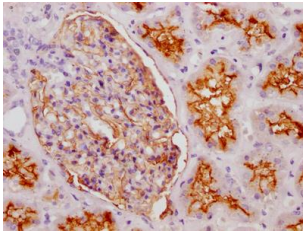
Immunogen:

A synthesized peptide derived from human CD10.

Storage:

Rabbit IgG in phosphate buffered saline, pH 7.4, 150mM NaCl, 0.02% sodium azide and 50% glycerol.

Product Images



IHC image of RACO0449 diluted at 1:100 and staining in paraffin-embedded human kidney tissue performed on a Leica Bond™ system. After dewaxing and hydration, antigen retrieval was mediated by high pressure in a citrate buffer (pH 6.0). Section was blocked with 10% normal goat serum 30min at RT. Then primary antibody (1% BSA) was incubated at 4°C overnight. The primary is detected by a Goat anti-rabbit IgG polymer labeled by HRP and visualized using 0.05% DAB.