

# FDFT1 Recombinant Antibody



RACO0450

---

## Product Information

**Size:**

50ul

**Reactivity:**

Human

**Source:**

Homo sapiens (Human)

**Isotype:**

Rabbit IgG

**Applications:**

ELISA, WB, IHC

**Recommended dilutions:**

WB:1:500-1:5000, IHC:1:50-1:200

**Protein Background:**

Endoplasmic reticulum, endoplasmic reticulum membrane, integral component of membrane, farnesyl-diphosphate farnesyltransferase activity, squalene synthase activity, cholesterol biosynthetic process, farnesyl diphosphate metabolic process, regulation of cholesterol biosynthetic process, regulation of lipid metabolic process, steroid biosynthetic process.

**Gene ID:**

FDFT1

**Uniprot**

P37268

**Synonyms:**

Squalene synthase (SQS) (SS) (EC 2.5.1.21) (FPP: FPP farnesyltransferase) (Farnesyl-diphosphate farnesyltransferase), FDFT1

**Immunogen:**

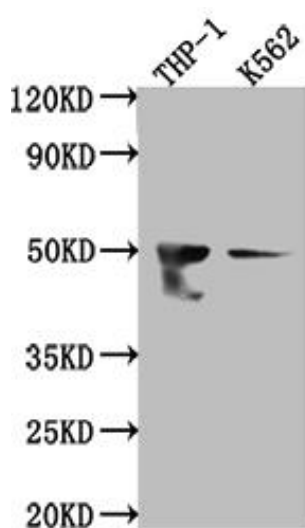
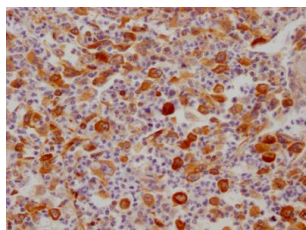
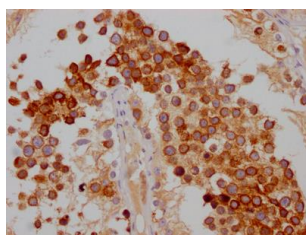
A synthesized peptide derived from human FDFT1.

**Storage:**

Rabbit IgG in phosphate buffered saline, pH 7.4, 150mM NaCl, 0.02% sodium azide and 50% glycerol.

## Product Images

---



IHC image of RACO0450 diluted at 1:100 and staining in paraffin-embedded human testis tissue performed on a Leica Bond™ system. After dewaxing and hydration, antigen retrieval was mediated by high pressure in a citrate buffer (pH 6.0). Section was blocked with 10% normal goat serum 30min at RT. Then primary antibody (1% BSA) was incubated at 4°C overnight. The primary is detected by a Goat anti-rabbit IgG polymer labeled by HRP and visualized using 0.05% DAB.

IHC image of RACO0450 diluted at 1:100 and staining in paraffin-embedded human lung cancer performed on a Leica Bond™ system. After dewaxing and hydration, antigen retrieval was mediated by high pressure in a citrate buffer (pH 6.0). Section was blocked with 10% normal goat serum 30min at RT. Then primary antibody (1% BSA) was incubated at 4°C overnight. The primary is detected by a Goat anti-rabbit IgG polymer labeled by HRP and visualized using 0.05% DAB.

### Western Blot

Positive WB detected in( THP-1 whole cell lysate) K562 whole cell lysate)

All lanes: FDFT1 antibody at 1:1000

Secondary

Goat polyclonal to rabbit IgG at 1:50000 dilution

Predicted band size: 49, 41, 39, 36, 44 kDa

Observed band size: 50 kDa