

# IL23A Recombinant Antibody



RACO0456

---

## Product Information

**Size:**

50ul

**Reactivity:**

Human

**Source:**

Homo sapiens (Human)

**Isotype:**

Rabbit IgG

**Applications:**

ELISA, WB

**Recommended dilutions:**

WB:1:500-1:5000

**Protein Background:**

Associates with IL12B to form the IL-23 interleukin, a heterodimeric cytokine which functions in innate and adaptive immunity. IL-23 may constitute with IL-17 an acute response to infection in peripheral tissues. IL-23 binds to a heterodimeric receptor complex composed of IL12RB1 and IL23R, activates the Jak-Stat signaling cascade, stimulates memory rather than naive T-cells and promotes production of proinflammatory cytokines. IL-23 induces autoimmune inflammation and thus may be responsible for autoimmune inflammatory diseases and may be important for tumorigenesis.

**Gene ID:**

IL23A

**Uniprot**

Q9NPF7

**Synonyms:**

Interleukin-23 subunit alpha (IL-23 subunit alpha) (IL-23-A) (Interleukin-23 subunit p19) (IL-23p19), IL23A, SGRF

**Immunogen:**

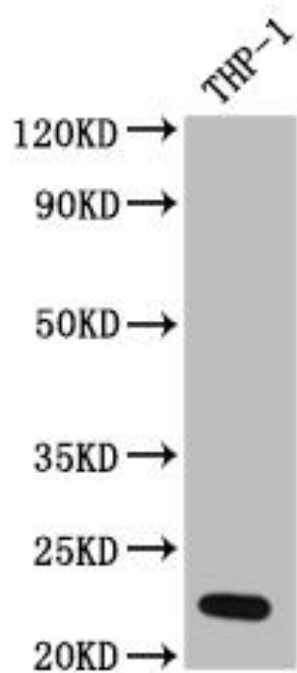
A synthesized peptide derived from human IL23.

**Storage:**

Rabbit IgG in phosphate buffered saline, pH 7.4, 150mM NaCl, 0.02% sodium azide and 50% glycerol.

## Product Images

---



### Western Blot

Positive WB detected in( THP-1 whole cell lysate) All lanes: IL23 antibody at 1:1000

Secondary

Goat polyclonal to rabbit IgG at 1:50000 dilution

Predicted band size: 21 kDa

Observed band size: 21 kDa