

PTH1R Recombinant Antibody



RACO0457

Product Information

Size:

50ul

Reactivity:

Human

Source:

Homo sapiens (Human)

Isotype:

Rabbit IgG

Applications:

ELISA, WB

Recommended dilutions:

WB:1:500-1:5000

Protein Background:

Receptor for parathyroid hormone and for parathyroid hormone-related peptide. The activity of this receptor is mediated by G proteins which activate adenylyl cyclase and also a phosphatidylinositol-calcium second messenger system.

Gene ID:

PTH1R

Uniprot

Q03431

Synonyms:

Parathyroid hormone/parathyroid hormone-related peptide receptor (PTH/PTHrP type I receptor) (PTH/PTHr receptor) (Parathyroid hormone 1 receptor) (PTH1 receptor), PTH1R, PTHR PTHR1

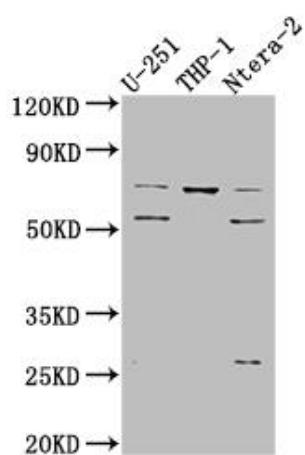
Immunogen:

A synthesized peptide derived from human Parathyroid Hormone Receptor 1.

Storage:

Rabbit IgG in phosphate buffered saline, pH 7.4, 150mM NaCl, 0.02% sodium azide and 50% glycerol.

Product Images



Western Blot

Positive WB detected in(U-251 whole cell lysate) THP-1 whole cell lysate) Ntera-2 whole cell lysate) All lanes: PTH1R antibody at 1:1000 Secondary

Goat polyclonal to rabbit IgG at 1:50000 dilution

Predicted band size: 67 kDa

Observed band size: 72, 55 kDa