

# NUP98 Recombinant Antibody



RACO0466

---

## Product Information

**Size:**

50ul

**Reactivity:**

Human

**Source:**

Homo sapiens (Human)

**Isotype:**

Rabbit IgG

**Applications:**

ELISA, WB, IHC, IF

**Recommended dilutions:**

WB:1:500-1:5000, IHC:1:50-1:200, IF:1:20-1:200

**Protein Background:**

Plays a role in the nuclear pore complex (NPC) assembly and/or maintenance. Nup98 and Nup96 are involved in the bidirectional transport across the NPC. May anchor NUP153 and TPR to the NPC.

**Gene ID:**

NUP98

**Uniprot**

P52948

**Synonyms:**

Nuclear pore complex protein Nup98-Nup96 (EC 3.4.21. -) [Cleaved into: Nuclear pore complex protein Nup98 (98 kDa nucleoporin) (Nucleoporin Nup98) (Nup98), Nuclear pore complex protein Nup96 (96 kDa nucleoporin) (Nucleoporin Nup96) (Nup96)], NUP98, ADAR2

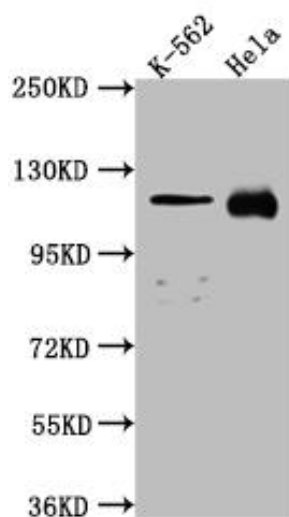
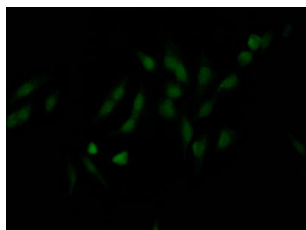
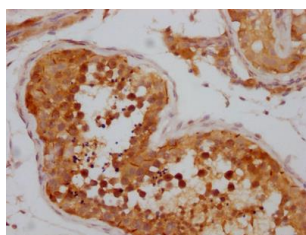
**Immunogen:**

A synthesized peptide derived from human NUP98.

**Storage:**

Rabbit IgG in phosphate buffered saline, pH 7.4, 150mM NaCl, 0.02% sodium azide and 50% glycerol.

## Product Images



IHC image of RACO0466 diluted at 1:100 and staining in paraffin-embedded human testis tissue performed on a Leica Bond™ system. After dewaxing and hydration, antigen retrieval was mediated by high pressure in a citrate buffer (pH 6.0). Section was blocked with 10% normal goat serum 30min at RT. Then primary antibody (1% BSA) was incubated at 4°C overnight. The primary is detected by a Goat anti-rabbit IgG polymer labeled by HRP and visualized using 0.05% DAB.

Immunofluorescence staining of HeLa Cells with RACO0466 at 1:50, counter-stained with DAPI. The cells were fixed in 4% formaldehyde, permeated by 0.2% TritonX-100, and blocked in 10% normal Goat Serum. The cells were then incubated with the antibody overnight at 4°C. Nuclear DNA was labeled in blue with DAPI. The secondary antibody was FITC-conjugated AffiniPure Goat Anti-Rabbit IgG (H+L).

### Western Blot

Positive WB detected in( K562 whole cell lysate) HeLa whole cell lysate)

All lanes: NUP98 antibody at 1:1000

Secondary

Goat polyclonal to rabbit IgG at 1:50000 dilution

Predicted band size: 198, 188, 98, 97, 196, 187 kDa

Observed band size: 100 kDa