

FCGR2A Recombinant Antibody



RACO0468

Product Information

Size:

50ul

Reactivity:

Human

Source:

Homo sapiens (Human)

Isotype:

Rabbit IgG

Applications:

ELISA, WB

Recommended dilutions:

WB:1:500-1:5000

Protein Background:

Binds to the Fc region of immunoglobulins gamma. Low affinity receptor. By binding to IgG it initiates cellular responses against pathogens and soluble antigens. Promotes phagocytosis of opsonized antigens.

Gene ID:

FCGR2A

Uniprot

P12318

Synonyms:

Low affinity immunoglobulin gamma Fc region receptor II-a (IgG Fc receptor II-a) (CDw32) (Fc-gamma RII-a) (Fc-gamma-RIIa) (FcRII-a) (CD antigen CD32), FCGR2A, CD32, FCG2, FCGR2A1, IGFR2

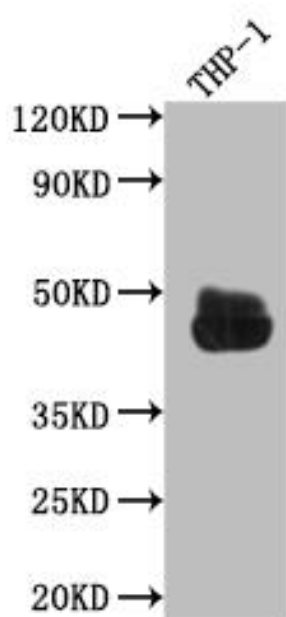
Immunogen:

A synthesized peptide derived from human CD32.

Storage:

Rabbit IgG in phosphate buffered saline, pH 7.4, 150mM NaCl, 0.02% sodium azide and 50% glycerol.

Product Images



Western Blot

Positive WB detected in(THP-1 whole cell lysate) All lanes: CD32 antibody at 1:1000

Secondary

Goat polyclonal to rabbit IgG at 1:50000 dilution

Predicted band size: 35, 36 kDa

Observed band size: 45 kDa