

ALDH2 Recombinant Antibody



RACO0472

Product Information

Size:

50ul

Reactivity:

Human, Mouse, Rat

Source:

Homo sapiens (Human)

Isotype:

Rabbit IgG

Applications:

ELISA, WB, IHC

Recommended dilutions:

WB:1:500-1:5000, IHC:1:50-1:200

Protein Background:

Extracellular exosome, mitochondrial matrix, aldehyde dehydrogenase (NAD) activity, aldehyde dehydrogenase [NAD(P)+] activity, electron carrier activity, NAD binding, alcohol metabolic process, carbohydrate metabolic process, ethanol oxidation.

Gene ID:

ALDH2

Uniprot

P05091

Synonyms:

Aldehyde dehydrogenase, mitochondrial (EC 1.2.1.3) (ALDH class 2) (ALDH-E2) (ALDHI), ALDH2, ALDM

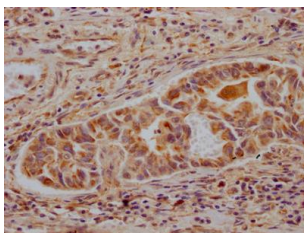
Immunogen:

A synthesized peptide derived from human ALDH2.

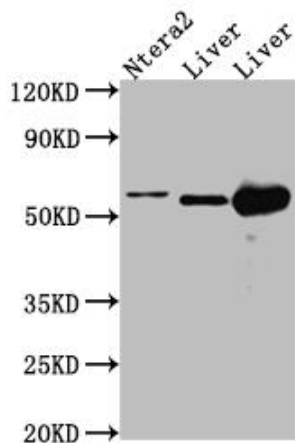
Storage:

Rabbit IgG in phosphate buffered saline, pH 7.4, 150mM NaCl, 0.02% sodium azide and 50% glycerol.

Product Images



IHC image of RACO0472 diluted at 1:100 and staining in paraffin-embedded human liver cancer performed on a Leica Bond™ system. After dewaxing and hydration, antigen retrieval was mediated by high pressure in a citrate buffer (pH 6.0). Section was blocked with 10% normal goat serum 30min at RT. Then primary antibody (1% BSA) was incubated at 4°C overnight. The primary is detected by a Goat anti-rabbit IgG polymer labeled by HRP and visualized using 0.05% DAB.



Western Blot

Positive WB detected in(Ntera-2 whole cell lysate) Mouse Liver whole cell lysate) Rat Liver cell lysate) All lanes: ALDH2 antibody at 1:1000 Secondary

Goat polyclonal to rabbit IgG at 1:50000 dilution

Predicted band size: 57, 51 kDa

Observed band size: 57 kDa