

# LPAR1 Recombinant Antibody



RACO0477

---

## Product Information

**Size:**

50ul

**Reactivity:**

Human

**Source:**

Homo sapiens (Human)

**Isotype:**

Rabbit IgG

**Applications:**

ELISA, WB

**Recommended dilutions:**

WB:1:500-1:5000

**Protein Background:**

Receptor for lysophosphatidic acid (LPA) . Plays a role in the reorganization of the actin cytoskeleton, cell migration, differentiation and proliferation, and thereby contributes to the responses to tissue damage and infectious agents. Activates downstream signaling cascades via the G(i)/G(o), G(12)/G(13), and G(q) families of heteromeric G proteins. Signaling inhibits adenylyl cyclase activity and decreases cellular cAMP levels . Signaling triggers an increase of cytoplasmic Ca(2+) levels . Activates RALA; this leads to the activation of phospholipase C (PLC) and the formation of inositol 1,4,5-trisphosphate . Signaling mediates activation of down-stream MAP kinases.

**Gene ID:**

LPAR1

**Uniprot**

Q92633

**Synonyms:**

Lysophosphatidic acid receptor 1 (LPA receptor 1) (LPA-1) (Lysophosphatidic acid receptor Edg-2), LPAR1, EDG2 LPA1

**Immunogen:**

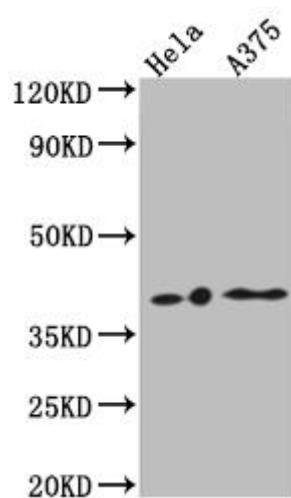
A synthesized peptide derived from human EDG2.

**Storage:**

Rabbit IgG in phosphate buffered saline, pH 7.4, 150mM NaCl, 0.02% sodium azide and 50% glycerol.

## Product Images

---



### Western Blot

Positive WB detected in( HeLa whole cell lysate) A375 whole cell lysate)

All lanes: EDG2 antibody at 1:1000

Secondary

Goat polyclonal to rabbit IgG at 1:50000 dilution

Predicted band size: 42, 42 kDa

Observed band size: 42 kDa