

PDE4D Recombinant Antibody



RACO0478

Product Information

Size:

50ul

Reactivity:

Human

Source:

Homo sapiens (Human)

Isotype:

Rabbit IgG

Applications:

ELISA, WB

Recommended dilutions:

WB:1:500-1:5000

Protein Background:

Hydrolyzes the second messenger cAMP, which is a key regulator of many important physiological processes.

Gene ID:

PDE4D

Uniprot

Q08499

Synonyms:

cAMP-specific 3',5'-cyclic phosphodiesterase 4D (EC 3.1.4.53) (DPDE3) (PDE43), PDE4D, DPDE3

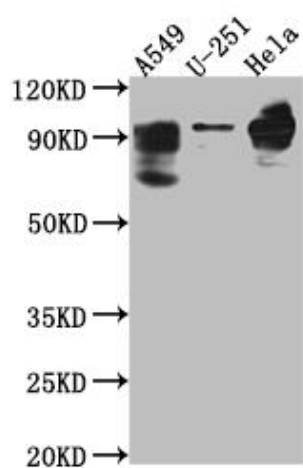
Immunogen:

A synthesized peptide derived from human PDE4D.

Storage:

Rabbit IgG in phosphate buffered saline, pH 7.4, 150mM NaCl, 0.02% sodium azide and 50% glycerol.

Product Images



Western Blot

Positive WB detected in(THP-1 whole cell lysate) All lanes: PDE4D antibody at 1:1000

Secondary

Goat polyclonal to rabbit IgG at 1:50000 dilution

Predicted band size: 92, 77, 69, 67, 58, 85, 24, 60, 78, 77, 85, 25 kDa

Observed band size: 92 kDa