

FLI1 Recombinant Antibody



RACO0479

Product Information

Size:

50ul

Reactivity:

Human

Source:

Homo sapiens (Human)

Isotype:

Rabbit IgG

Applications:

ELISA, WB

Recommended dilutions:

WB:1:500-1:5000

Protein Background:

Sequence-specific transcriptional activator. Recognizes the DNA sequence 5'-C[CA]GGAAGT-3'.

Gene ID:

FLI1

Uniprot

Q01543

Synonyms:

Friend leukemia integration 1 transcription factor (Proto-oncogene Fli-1) (Transcription factor ERGB), FLI1

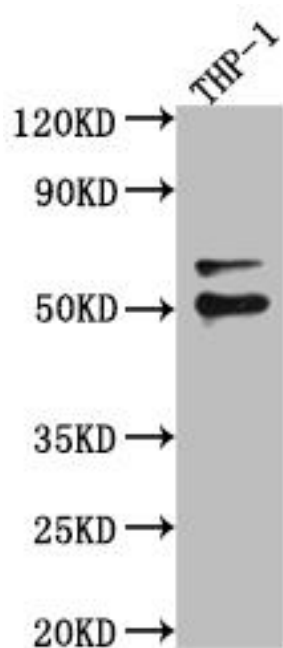
Immunogen:

A synthesized peptide derived from human FLI1.

Storage:

Rabbit IgG in phosphate buffered saline, pH 7.4, 150mM NaCl, 0.02% sodium azide and 50% glycerol.

Product Images



Western Blot

Positive WB detected in(A549 whole cell lysate) U-251 whole cell lysate)

Hela whole cell lysate) All lanes: FLI1 antibody at 1:1000

Secondary

Goat polyclonal to rabbit IgG at 1:50000 dilution

Predicted band size: 51, 44, 48, 30 kDa

Observed band size: 51 kDa