

RACO0481

Product Information

Size:

50ul

Reactivity:

Human, Mouse

Source:

Homo sapiens (Human)

Isotype:

Rabbit IgG

Applications:

ELISA, WB

Recommended dilutions:

WB:1:500-1:5000

Protein Background:

Stress-activated serine/threonine-protein kinase involved in cytokine production, endocytosis, reorganization of the cytoskeleton, cell migration, cell cycle control, chromatin remodeling, DNA damage response and transcriptional regulation. Following stress, it is phosphorylated and activated by MAP kinase p38-alpha/MAPK14, leading to phosphorylation of substrates. Phosphorylates serine in the peptide sequence, Hyd-X-R-X(2)-S, where Hyd is a large hydrophobic residue. Phosphorylates ALOX5, CDC25B, CDC25C, CEP131, ELAVL1, HNRNPA0, HSP27/HSPB1, KRT18, KRT20, LIMK1, LSP1, PABPC1, PARN, PDE4A, RCSD1, RPS6KA3, TAB3 and TTP/ZFP36.

Gene ID:

MAPKAPK2

Uniprot

P49137

Synonyms:

MAP kinase-activated protein kinase 2 (MAPK-activated protein kinase 2) (MAPKAP kinase 2) (MAPKAP-K2) (MAPKAPK-2) (MK-2) (MK2) (EC 2.7.11.1), MAPKAPK2

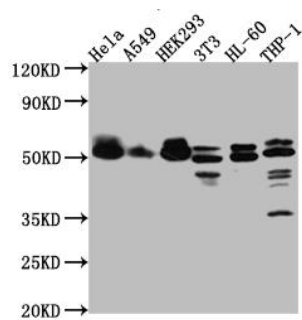
Immunogen:

A synthesized peptide derived from human MAPKAP Kinase 2.

Storage:

Rabbit IgG in phosphate buffered saline, pH 7.4, 150mM NaCl, 0.02% sodium azide and 50% glycerol.

Product Images



Western Blot

Positive WB detected in(Hela whole cell lysate) A549 whole cell lysate) HEK293 whole cell lysate) NIH/3T3 whole cell lysate) HL-60 whole cell lysate) THP-1 whole cell lysate) All lanes: MAPKAPK2 antibody at 1:1000 Secondary

Goat polyclonal to rabbit IgG at 1:50000 dilution

Predicted band size: 46, 43 kDa

Observed band size: 50 kDa