

DRD3 Recombinant Antibody



RACO0484

Product Information

Size:

50ul

Reactivity:

Human, Rat

Source:

Homo sapiens (Human)

Isotype:

Rabbit IgG

Applications:

ELISA, WB

Recommended dilutions:

WB:1:500-1:5000

Protein Background:

Dopamine receptor whose activity is mediated by G proteins which inhibit adenylyl cyclase. Promotes cell proliferation.

Gene ID:

DRD3

Uniprot

P35462

Synonyms:

D(3) dopamine receptor (Dopamine D3 receptor), DRD3

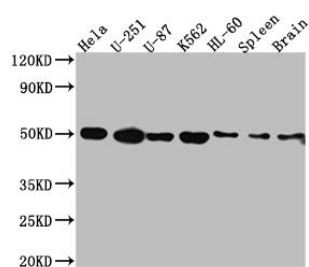
Immunogen:

A synthesized peptide derived from human Dopamine Receptor D3.

Storage:

Rabbit IgG in phosphate buffered saline, pH 7.4, 150mM NaCl, 0.02% sodium azide and 50% glycerol.

Product Images



Western Blot

Positive WB detected in(HeLa whole cell lysate) U-251 whole cell lysate) U-87 whole cell lysate) K562 whole cell lysate) HL-60 whole cell lysate) Rat Spleen whole cell lysate) Rat Brain whole cell lysate) All lanes: Dopamine Receptor D3 antibody at 1:1000

Secondary

Goat polyclonal to rabbit IgG at 1:50000 dilution

Predicted band size: 45, 41 kDa

Observed band size: 50 kDa