

RACO0488

Product Information

Size:

50ul

Reactivity:

Human

Source:

Homo sapiens (Human)

Isotype:

Rabbit IgG

Applications:

ELISA, WB, IHC

Recommended dilutions:

WB:1:500-1:5000, IHC:1:50-1:200

Protein Background:

Transcription factor that plays an important role in cellular development and cell survival . Recognizes and binds to the DNA sequence 5'-GCG(T/G)GGGCG-3' . Regulates the expression of numerous target genes, including EPO. Plays an essential role for development of the urogenital system. It has a tumor suppressor as well as an oncogenic role in tumor formation. Function may be isoform-specific: isoforms lacking the KTS motif may act as transcription factors . Isoforms containing the KTS motif may bind mRNA and play a role in mRNA metabolism or splicing . Isoform 1 has lower affinity for DNA, and can bind RNA .

Gene ID:

WT1

Uniprot

P19544

Synonyms:

Wilms tumor protein (WT33), WT1

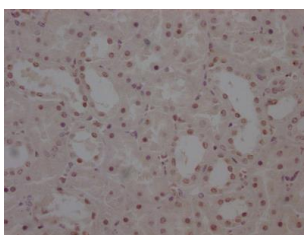
Immunogen:

A synthesized peptide derived from human Wilms Tumor Protein.

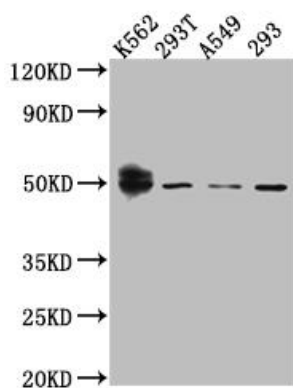
Storage:

Rabbit IgG in phosphate buffered saline, pH 7.4, 150mM NaCl, 0.02% sodium azide and 50% glycerol.

Product Images



IHC image of RACO0488 diluted at 1:100 and staining in paraffin-embedded human kidney tissue performed on a Leica Bond™ system. After dewaxing and hydration, antigen retrieval was mediated by high pressure in a citrate buffer (pH 6.0). Section was blocked with 10% normal goat serum 30min at RT. Then primary antibody (1% BSA) was incubated at 4°C overnight. The primary is detected by a Goat anti-rabbit IgG polymer labeled by HRP and visualized using 0.05% DAB.



Western Blot

Positive WB detected in(K562 whole cell lysate) 293T whole cell lysate) A549 whole cell lysate) HEK293 whole cell lysate) All lanes: Wilms Tumor Protein antibody at 1:1000

Secondary

Goat polyclonal to rabbit IgG at 1:50000 dilution

Predicted band size: 50, 48, 48, 49, 35, 57, 56, 34 kDa

Observed band size: 50 kDa