

RACO0489

---

## Product Information

**Size:**

50ul

**Reactivity:**

Human

**Source:**

Homo sapiens (Human)

**Isotype:**

Rabbit IgG

**Applications:**

ELISA, WB, IHC

**Recommended dilutions:**

WB:1:500-1:5000, IHC:1:50-1:200

**Protein Background:**

The alpha-V (ITGAV) integrins are receptors for vitronectin, cytotactin, fibronectin, fibrinogen, laminin, matrix metalloproteinase-2, osteopontin, osteomodulin, prothrombin, thrombospondin and vWF. They recognize the sequence R-G-D in a wide array of ligands. ITGAV: ITGB3 binds to fractalkine (CX3CL1) and may act as its coreceptor in CX3CR1-dependent fractalkine signaling . ITGAV: ITGB3 binds to NRG1 (via EGF domain) and this binding is essential for NRG1-ERBB signaling . ITGAV: ITGB3 binds to FGF1 and this binding is essential for FGF1 signaling . ITGAV: ITGB3 binds to IGF1 and this binding is essential for IGF1 signaling . ITGAV: ITGB3 binds to PLA2G2A via a site (site 2) which is distinct from the classical ligand-binding site (site 1) and this induces integrin conformational changes and enhanced ligand binding to site 1 . ITGAV: ITGB3 and ITGAV: ITGB6 act as a receptor for fibrillin-1 (FBN1) and mediate R-G-D-dependent cell adhesion to FBN1 .

**Gene ID:**

ITGAV

**Uniprot**

P06756

**Synonyms:**

Integrin alpha-V (Vitronectin receptor) (Vitronectin receptor subunit alpha) (CD antigen CD51) [Cleaved into: Integrin alpha-V heavy chain, Integrin alpha-V light chain], ITGAV, MSK8 VNRA VTNR

**Immunogen:**

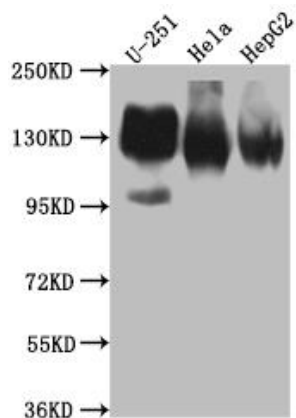
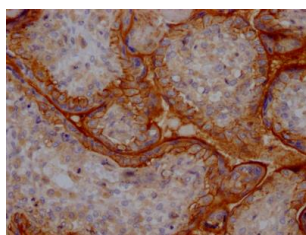
A synthesized peptide derived from human Integrin alpha V.

**Storage:**

Rabbit IgG in phosphate buffered saline, pH 7.4, 150mM NaCl, 0.02% sodium azide and 50% glycerol.

## Product Images

---



IHC image of RACO0489 diluted at 1:100 and staining in paraffin-embedded human placenta tissue performed on a Leica Bond™ system. After dewaxing and hydration, antigen retrieval was mediated by high pressure in a citrate buffer (pH 6.0). Section was blocked with 10% normal goat serum 30min at RT. Then primary antibody (1% BSA) was incubated at 4°C overnight. The primary is detected by a Goat anti-rabbit IgG polymer labeled by HRP and visualized using 0.05% DAB.

### Western Blot

Positive WB detected in ( U-251 whole cell lysate) HeLa whole cell lysate) HepG2 whole cell lysate) All lanes: ITGAV antibody at 1:1000

Secondary

Goat polyclonal to rabbit IgG at 1:50000 dilution

Predicted band size: 117, 113, 112 kDa

Observed band size: 130 kDa