

RACO0492

Product Information

Size:

50ul

Reactivity:

Human

Source:

Homo sapiens (Human)

Isotype:

Rabbit IgG

Applications:

ELISA, IHC

Recommended dilutions:

IHC:1:50-1:200

Protein Background:

Transferrins are iron binding transport proteins which can bind two Fe(3+) ions in association with the binding of an anion, usually bicarbonate.

Gene ID:

LTF

Uniprot

P02788

Synonyms:

Lactotransferrin (Lactoferrin) (EC 3.4.21. -) (Growth-inhibiting protein 12) (Tala lactoferrin) [Cleaved into: Lactoferricin-H (Lfcin-H), Kaliocin-1, Lactoferroxin-A, Lactoferroxin-B, Lactoferroxin-C], LTF, GIG12 LF

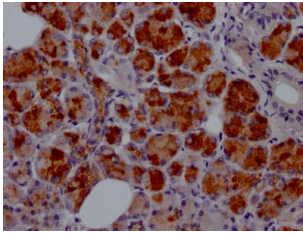
Immunogen:

A synthesized peptide derived from human Lactoferrin.

Storage:

Rabbit IgG in phosphate buffered saline, pH 7.4, 150mM NaCl, 0.02% sodium azide and 50% glycerol.

Product Images



IHC image of RACO0492 diluted at 1:100 and staining in paraffin-embedded human salivary gland tissue performed on a Leica Bond™ system. After dewaxing and hydration, antigen retrieval was mediated by high pressure in a citrate buffer (pH 6.0). Section was blocked with 10% normal goat serum 30min at RT. Then primary antibody (1% BSA) was incubated at 4°C overnight. The primary is detected by a Goat anti-rabbit IgG polymer labeled by HRP and visualized using 0.05% DAB.